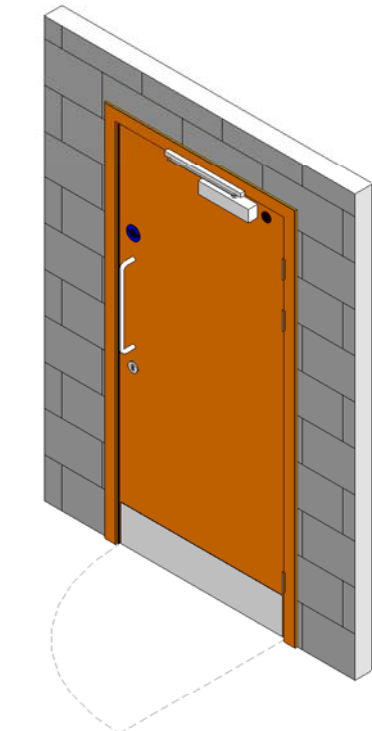


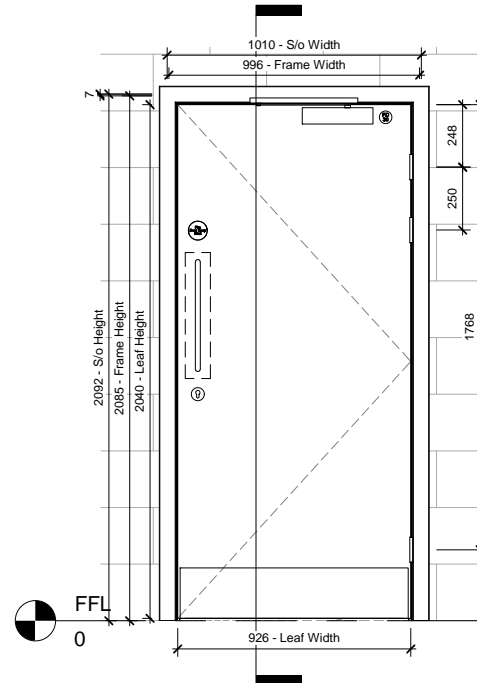
Rev By	Date	Description Of Revision	Rev No.	Drawing Title: Single 3 Hinge Door		
				Contract: TBC		
				Scale: NTS	Requested By:	Drawn By: IS
				Initial Drawing:	Revision: 0	Drawing No. TBC



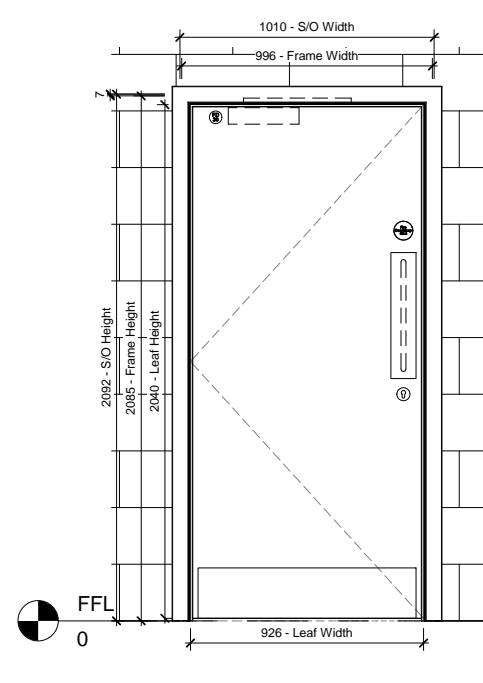
Foris Solutions Limited
 Unit 7 Bookers Way,
 Todwick Road Industrial Estate,
 Dinnington, Sheffield, S25 3SH.
 Tel: 01909 560500
 sales@foris-solutions.co.uk
 www.foris-solutions.co.uk



01 3D External View

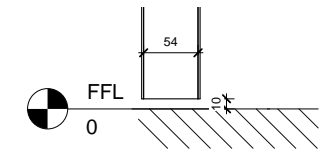
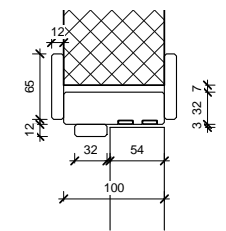


02 Pull Face
1 : 20

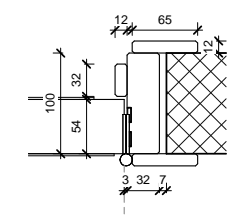


03 Push Face
1 : 20

04 Head Detail
1 : 5



05 Undercut Detail
1 : 5



06 Jamb Detail
1 : 5

Door Schedule																															
Description	RoomName	DoorNumber	S/o Height	S/o Width	FrameHeight	FrameWidth	Frame Depth	FrameThickness	LeafThickness	Undercut	DoorCore	ExposedOrConcealedLips	DoorFacingType	DoorFacingSpecies	DoorFacingCut/Reference	LippingSpecies	FireRating	Operation	DoorHanding	Hinge/PivotNo	Hinge/PivotType	FirstHingePosition	SecondHingePosition	ThirdHingePosition	FrameRequired	FrameMaterial	Frame Type	BillableHours	BatchNumber	dB	Ironmongeryset
Single Leaf Door	Locking Store/Utility	SA1.6	2092	1010	2085	996	100	32	54	10	TBC	TBC	TBC	TBC	TBC	TBC	FD60S	Single Swing	Right Hand Hung	3	TBC	248	498	1768	Yes	TBC	PSE Frame		N/A	TBC	

© All items on this drawing are the property of Foris Solutions LTD and as such are copyrighted by them. No drawing should be copied, edited or retained by another party unless prior written permission is obtained. All scales attached to this drawing are meant as a guide and as such this document should not be scaled from. All dimensions where it is applicable should be checked on site by the contractor prior to commencement of any work.