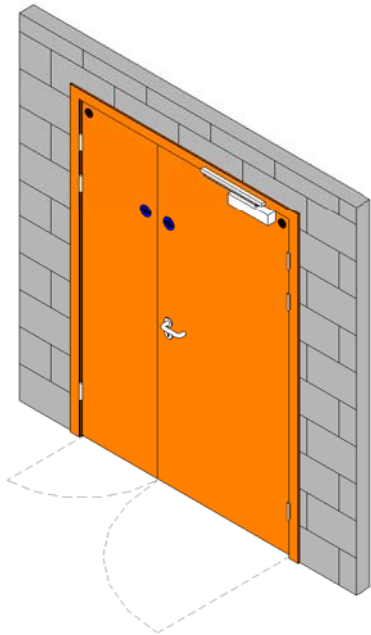


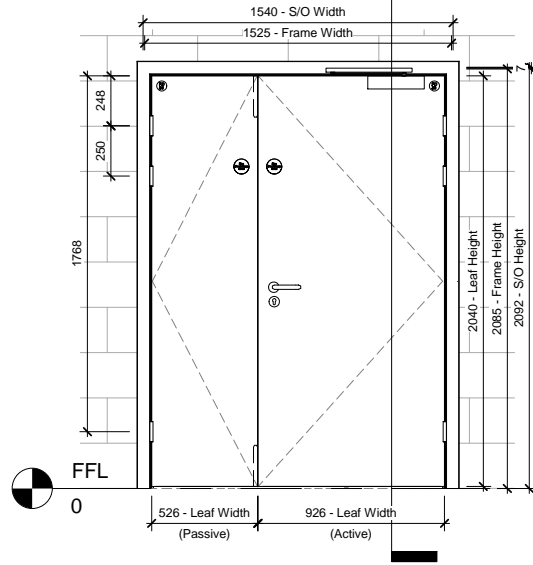
Rev By	Date	Description Of Revision	Rev No.	Drawing Title: Unequal 3 Hinge Door		
				Contract: TBC		
				Scale: NTS	Requested By:	Drawn By: IS
				Initial Drawing:	Revision: 0	Drawing No. TBC



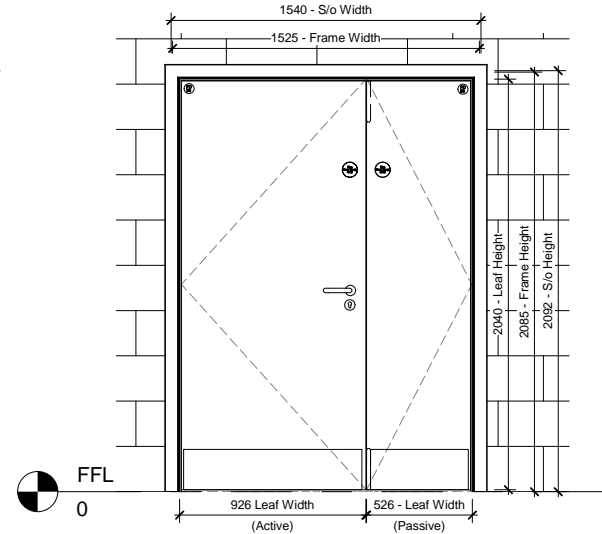
**Foris Solutions Limited**  
 Unit 7 Bookers Way,  
 Todwick Road Industrial Estate,  
 Dinnington, Sheffield, S25 3SH.  
 Tel: 01909 560500  
 sales@foris-solutions.co.uk  
 www.foris-solutions.co.uk



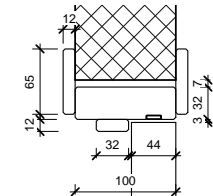
**01 3D External View**



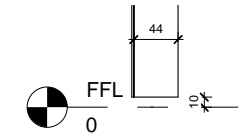
**02 Pull Face**  
1 : 25



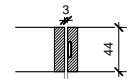
**03 Push Face**  
1 : 25



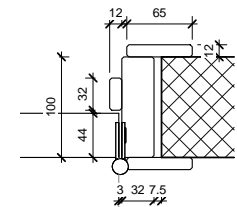
**04 Head Detail**  
1 : 5



**05 Undercut Detail**  
1 : 5



**06 Meeting Stile Detail**  
1 : 5



**07 Jamb Detail**  
1 : 5

Door Schedule																																				
Description	Room Name	Door Number	S/o Height	S/o Width	Frame Height	Frame Width	Frame Depth	Frame Thickness	Leaf Thickness	Undercut	Door Core	Exposed Or Concealed Lips	Door Facing Type	Door Facing Species	Door Facing Cur / Reference	Lipping Species	Operation	Fire Rating	Door Handing	Hinge/Pivot No	Hinge/Pivot Type	First Hinge Position	Second Hinge Position	Third Hinge Position	Flush Or Bolection	Frame Required	Top VP Height	Top VP Width	VP Distance from leaf edge	VP Distance from Bottom	Frame Material	Frame Type	Billable Hours	Batch Number	dB	Ironmongery set reference
Unequal Pair Door	Locking Cupboard/ Store	SA42.3	2092	1540	2085	1525	100	32	44	10	TBC	TBC	TBC	TBC	TBC	TBC	Single Swing	FD30s	Anti-Clockwise	3	TBC	248	498	1768	Bolection	Yes	1450	200	200	406	TBC	PSE Frame		N/A	TBC	

© All items on this drawing are the property of Foris Solutions LTD and as such are copyrighted by them. No drawing should be copied, edited or retained by another party unless prior written permission is obtained. All scales attached to this drawing are meant as a guide and as such this document should not be scaled from. All dimensions where it is applicable should be checked on site by the contractor prior to commencement of any work.