

Foris Finishes Collection

foris solutions

egress & access specialists



www.foris-solutions.co.uk

Why Foris Solutions?

Since our inception in 2003 Foris Solutions has evolved to continually meet Construction Industry dynamics, providing Architects, Contractors and Building Owners with fully co-coordinated door opening solutions from a single source.

We assist designers and contractors in all aspects of integrating doorsets with relevant ironmongery. Our core business is the specification of ironmongery and we understand how electronic technologies, ironmongery and the doorset itself are combined to deliver robust and reliable functions at each opening.

constantly evolving Foris Solutions offer doorsets, Architectural Ironmongery, Access Control and Washroom solutions. Such products allow us to provide a seamless link through the construction process to ensure the end result complies with the clients requirement.

Each and every piece of the jigsaw!



Doorsets



Architectural
Ironmongery



Access Control



Cubicles + Washroom
Accessories

Contents

Lever Handles - Pages 4 - 18



Sasso



Velino



Trentino



Amiata



Varese

Complete Ranges - Pages 19 - 29



Black
Edition



Oil Rubbed
Bronze

Accessories - Pages 30 - 38



Accessories



Hinges



Door Stops



Hat & Coat
Hooks

Locks & Cylinders - Pages 39 - 48



Locks &
Latches



Locking
Cylinders

Door Closing Devices - Pages 49 - 55



Overhead
Door Closers

Bathroom Accessories - Pages 56 - 74



Pompei



Cartago



Creta



Gerunda



Formentera



Italica



Lucentum



Complimentary
Bathroom
Fittings

Bathroom Accessories - Pages 75 - 83



Verdedri



SMARTdri
Plus



BLADEflow-2



AiRforce



Dispensers

SASSO



SASSO on backplate in polished nickel



SASSO

Levers on Rose



EUL010SN
Satin Nickel



EUL010PN
Polished Nickel



EUL010MBRZ
Matt Bronze



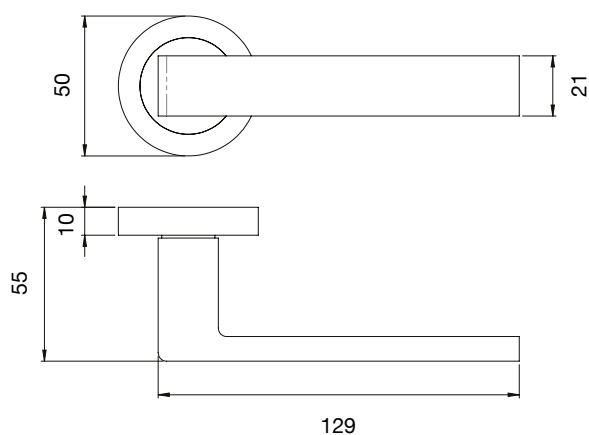
EUL010AB
Antique Brass



EUL010SB
Satin Brass



EUL010MB
Matt Black



SASSO

Levers on Backplate
(Suitable only for doors with
a minimum depth of 44mm)

EUL012 LATCH

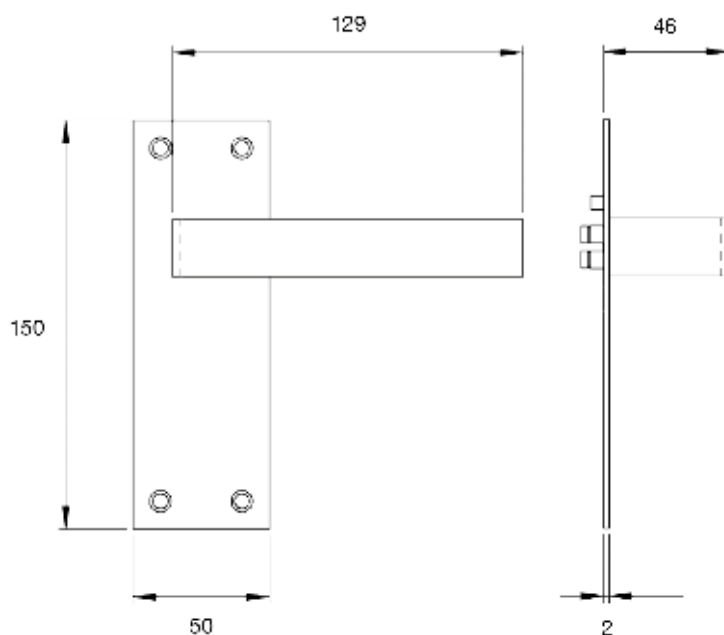
EUL011 LOCK (57mm c/c)

(Special Order) **EUL011Y EURO** (47.5mm c/c)

EUL013 BATHROOM (57mm c/c)



**MADE IN
ITALY**



EUL012SN
Satin Nickel



EUL012PN
Polished Nickel



EUL012MBRZ
Matt Bronze



EUL012AB
Antique Brass



EUL012SB
Satin Brass



EUL012MB
Matt Black



VELINO



VELINO on rose in matt black



VELINO

Levers on Rose



EUL020SN
Satin Nickel



EUL020PN
Polished Nickel



EUL020MBRZ
Matt Bronze



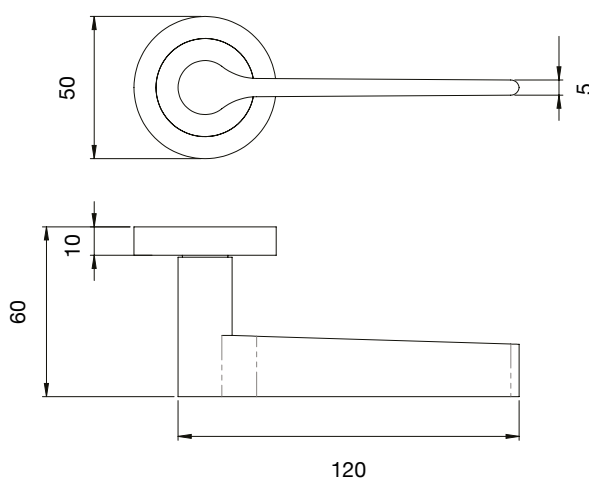
EUL020AB
Antique Brass



EUL020SB
Satin Brass



EUL020MB
Matt Black



VELINO

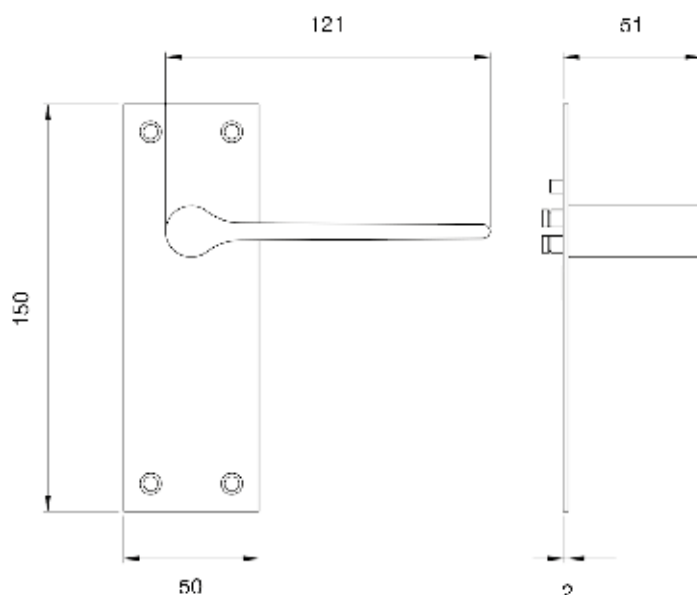
Levers on Backplate
(Suitable only for doors with
a minimum depth of 44mm)

EUL022 LATCH

EUL021 LOCK (57mm c/c)

(Special Order) **EUL021Y EURO** (47.5mm c/c)

EUL023 BATHROOM (57mm c/c)



EUL022SN
Satin Nickel



EUL022PN
Polished Nickel



EUL022MBRZ
Matt Bronze



EUL022AB
Antique Brass



EUL022SB
Satin Brass



EUL022MB
Matt Black



TRENTINO

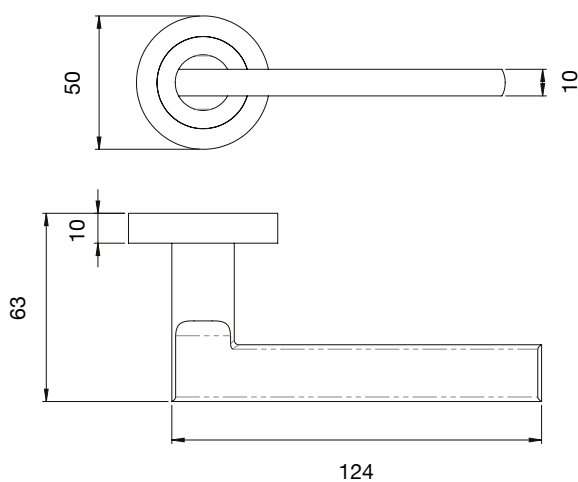


TRENTINO on backplate in polished nickel



TRENTINO

Levers on Rose



EUL030SN
Satin Nickel



EUL030PN
Polished Nickel



EUL030MBRZ
Matt Bronze



EUL030AB
Antique Brass



EUL030SB
Satin Brass



EUL030MB
Matt Black





TRENTINO

Levers on Backplate
(Suitable only for doors with
a minimum depth of 44mm)

EUL032 LATCH

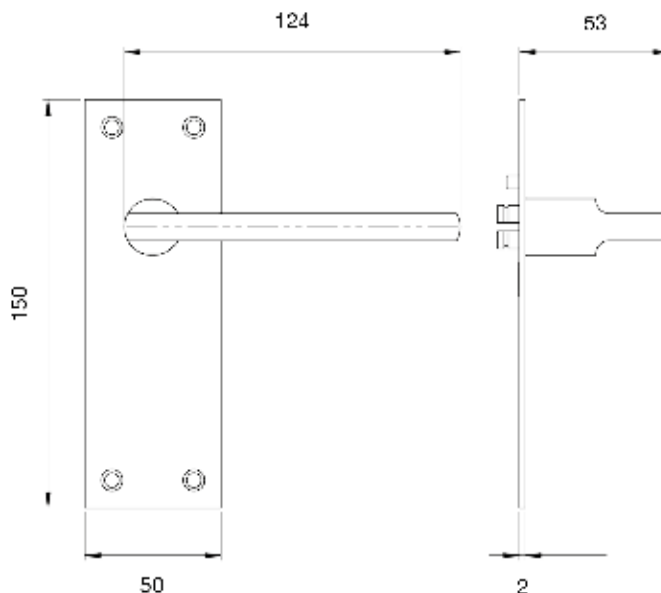
EUL031 LOCK (57mm c/c)

(Special Order) **EUL031Y EURO** (47.5mm c/c)

EUL033 BATHROOM (57mm c/c)



**MADE IN
ITALY**



EUL032SN
Satin Nickel



EUL032PN
Polished Nickel



EUL032MBRZ
Matt Bronze



EUL032AB
Antique Brass



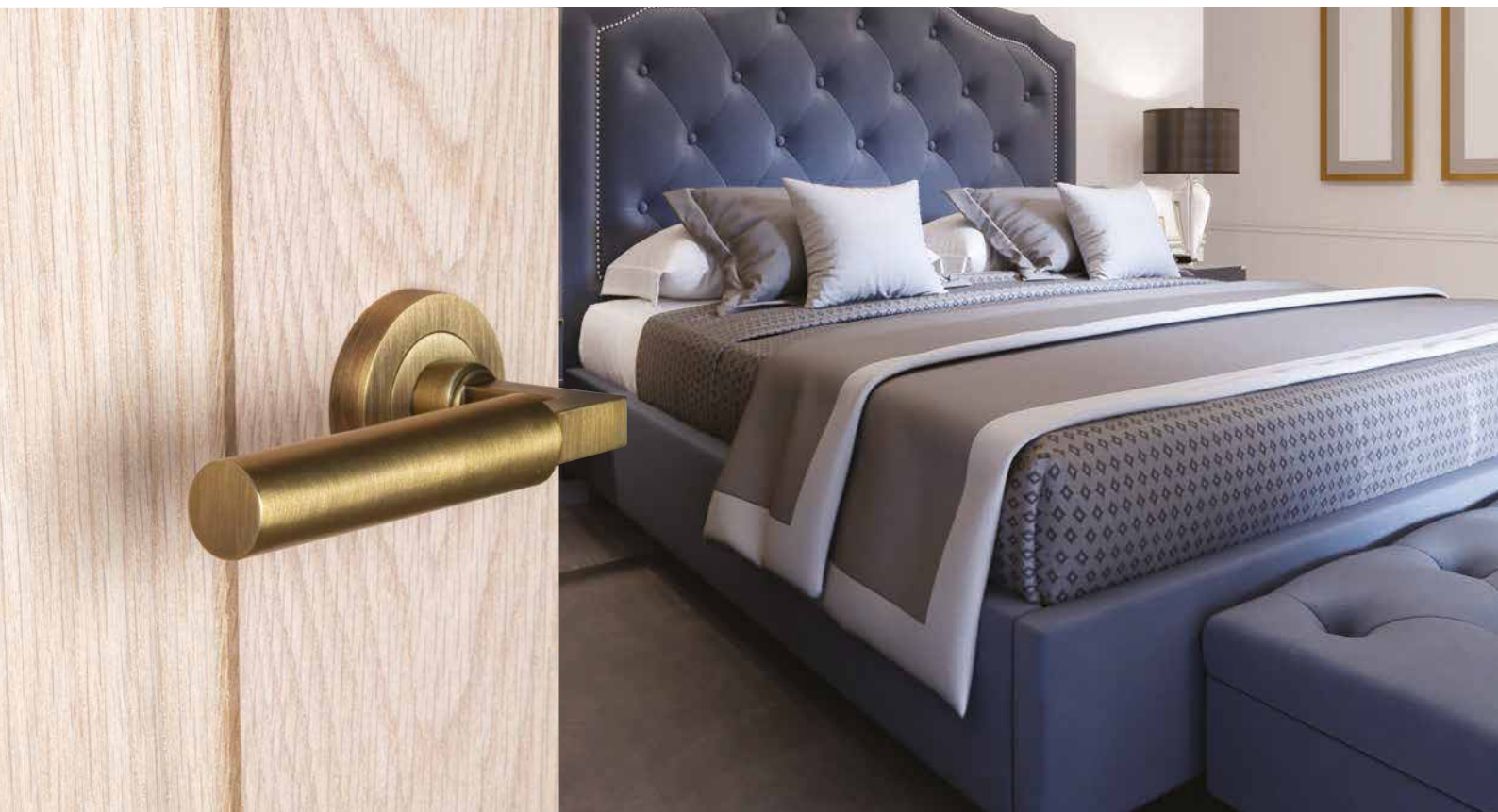
EUL032SB
Satin Brass



EUL032MB
Matt Black



AMIATA

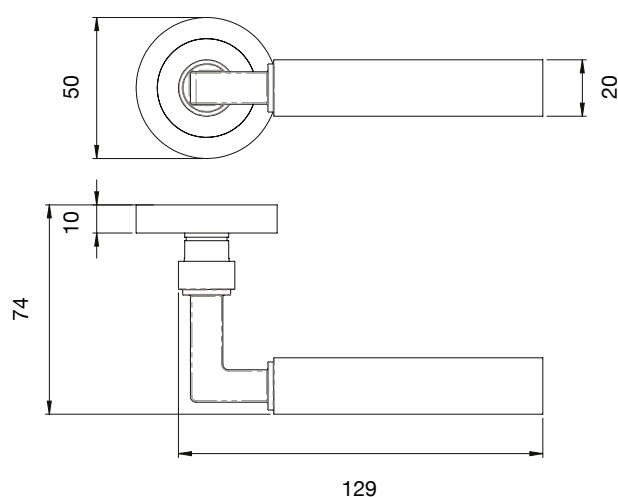


AMIATA on rose in antique brass



AMIATA

Levers on Rose



EUL040SN
Satin Nickel



EUL040PN
Polished Nickel



EUL040MBRZ
Matt Bronze



EUL040AB
Antique Brass



EUL040SB
Satin Brass



EUL040MB
Matt Black



AMIATA

Levers on Backplate
(Suitable only for doors with
a minimum depth of 44mm)

EUL042 LATCH

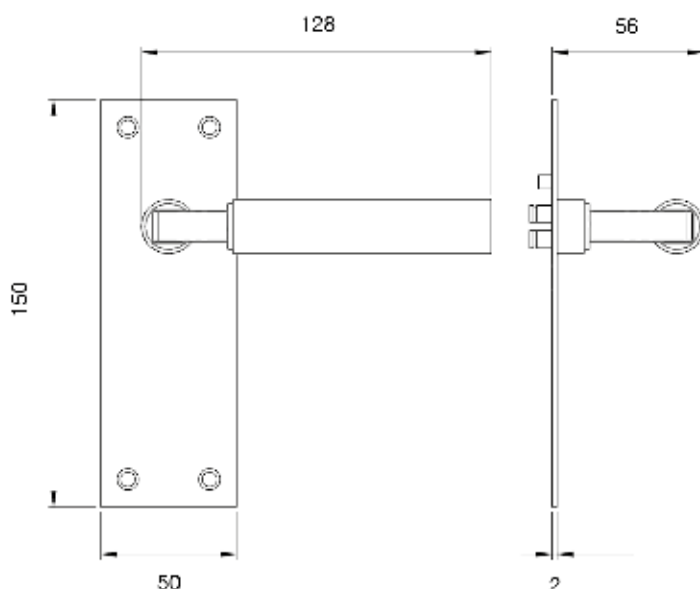
EUL041 LOCK (57mm c/c)

(Special Order) **EUL041Y EURO** (47.5mm c/c)

EUL043 BATHROOM (57mm c/c)



**MADE IN
ITALY**



EUL042SN
Satin Nickel



EUL042PN
Polished Nickel



EUL042MBRZ
Matt Bronze



EUL042AB
Antique Brass



EUL042SB
Satin Brass



EUL042MB
Matt Black



VARESE



VARESE on rose in matt bronze

VARESE

Knurled Levers on Rose

Recommended for use with
TLS/DL heavy duty latch



EUL050SN
Satin Nickel



EUL050PN
Polished Nickel



EUL050MBRZ
Matt Bronze



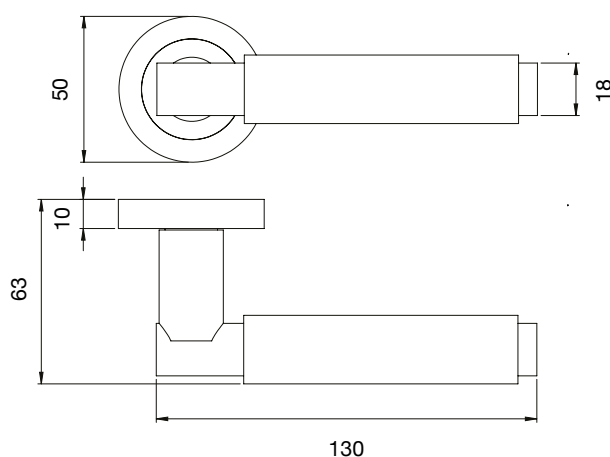
EUL050AB
Antique Brass

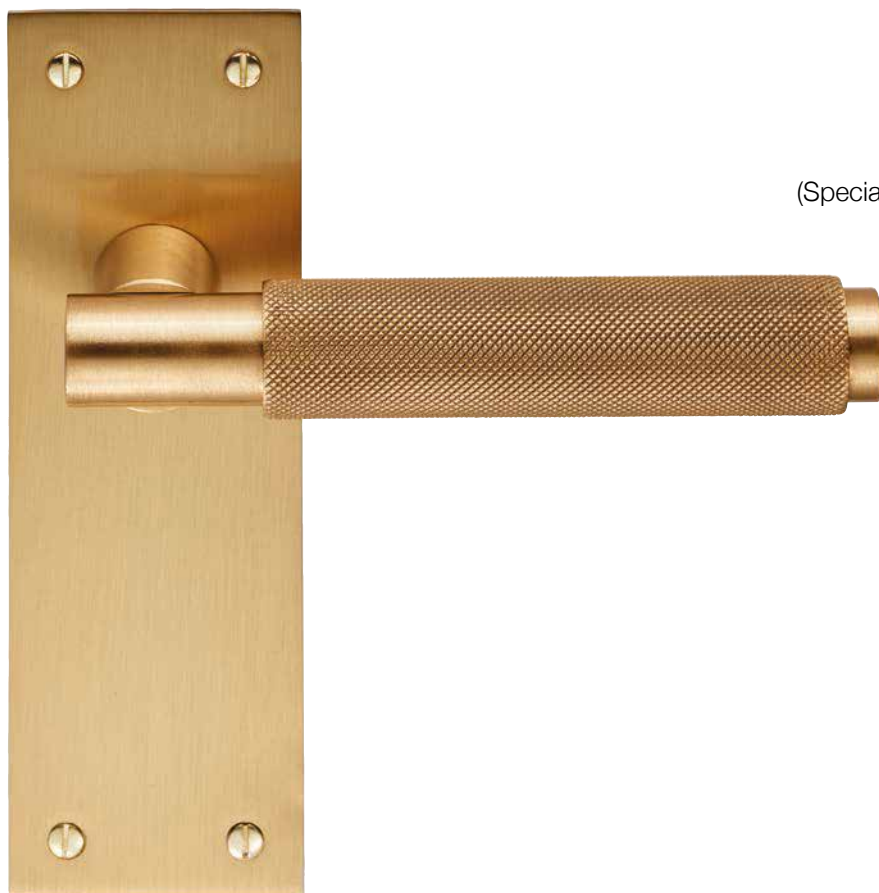


EUL050SB
Satin Brass



EUL050MB
Matt Black





VARESE

Knurled Levers on Backplate
(Suitable only for doors with a minimum depth of 44mm)

EUL052 LATCH

EUL051 LOCK (57mm c/c)

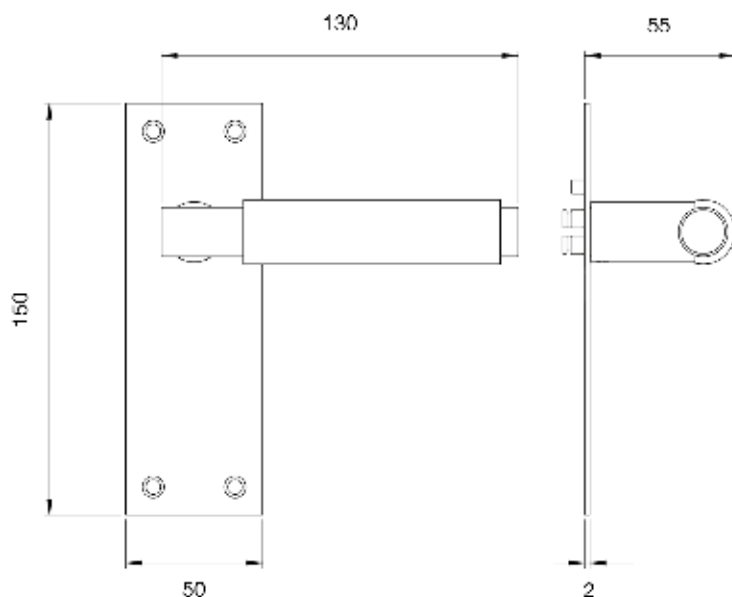
(Special Order) **EUL051Y EURO** (47.5mm c/c)

EUL053 BATHROOM (57mm c/c)

Recommended for use with
TLS/DL heavy duty latch



MADE IN ITALY



EUL052SN
Satin Nickel



EUL052PN
Polished Nickel



EUL052MBRZ
Matt Bronze



EUL052AB
Antique Brass



EUL052SB
Satin Brass



EUL052MB
Matt Black



BLACK EDITION





STAINLESS STEEL BLACK EDITION



Rhodes - ER28



Corfu - ER24



Madeira - ER45



Verona - ER37



Rhodes - EPL28

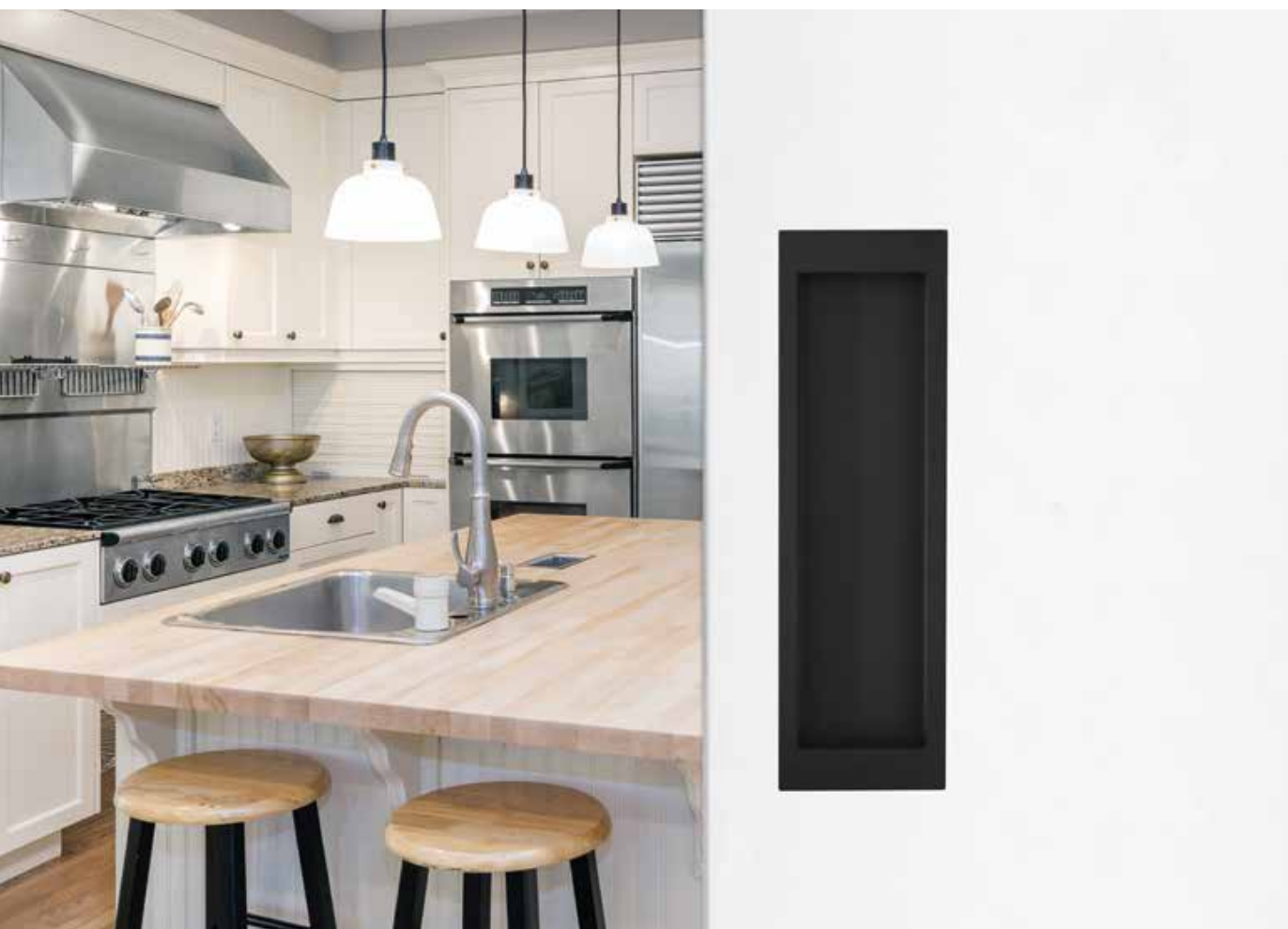
→ The discretion and refinement of the flush rose in a cosmos black finish enhances the handle and elegantly decorates all your rooms.



Torino - R53Q



Seattle - ER46Q



COSMOS BLACK - STAINLESS STEEL



EPDQ2
210 x 63 x 8,5 mm,
lockable



EPDQ2 OS
210 x 63 x 8,5 mm,
unlockable





EPDQ
57 x 57 x 12 mm
lockable



EPD
Ø 63 x 12 mm
lockable



EPDQ OS
57 x 57 x 12 mm
unlockable



EPD OS
Ø 63 x 12 mm
unlockable



EHSSET28
dimensions:
160 x 34 x 14 mm
version: UN or PZ



EHSSET52Q
dimensions:
160 x 34 x 14 mm
version: UN or PZ



BLACK EDITION - STAINLESS STEEL



EK550 GRQ
60 x 60 mm
fixed or operational



EK520 R2
Ø 54 mm
fixed or operational



ESR500 KS
55 x 55 x 10 mm
security escutcheon
with cylinder protection
certified DIN 18257 ES1



ESR332 PZ
Ø 52 mm
security escutcheon
also available with
cylinder protection
ESR500 KS



ES3

From 300mm to 1200mm
Ø 32mm



ES46

300mm and 400mm
19 x 22mm



ES6Q

From 400 mm to 1000mm
40 x 20mm



EK570 RQ

80 x 80 cm
only fixed



EZ217

Ø 35mm, height 41mm



EZ210

Height 80mm



EZ217Q

40 x 40mm, height 41mm



OIL RUBBED BRONZE - STAINLESS STEEL



Rhodes - ER28



Seattle - ER46Q



Madeira - EPL45



Madeira - ER45Q



EF454
window handle
matching to ER45



EF284
window handle
matching to ER28



EF454Q
window handle
matching to ER45Q



EF464Q
window handle
matching to ER46Q



EGS360Q OS
glass door lock, unlockable
incl. lockcase and hinges
excl. door handles



EZ217
Ø 35 mm, height 41 mm



STAINLESS STEEL OIL RUBBED BRONZE



EK550 GRQ
60 x 60 mm
fixed or operational



EK530 R2
Ø 54 mm
fixed or operational



EZ1340 BB
52 x 52 mm
key hole



EZ1332 PZ
Ø 52 mm
euro profile



EPDQ
57 x 57 x 12 mm
lockable



EPD
Ø 63 x 12 mm
lockable



EPDQ OS
57 x 57 x 12 mm
unlockable



EPD OS
Ø 63 x 12 mm
unlockable



EHSSET28
dimensions:
160 x 34 x 14 mm
version: UN or PZ



EHSSET52Q
dimensions:
160 x 34 x 14 mm
version: UN or PZ

ACCESSORIES



EUL001

Euro Escutcheon

EUL002

Lock Escutcheon



EUL001



EUL002



EUL001SN

Satin Nickel



EUL001PN

Polished Nickel



EUL001MBRZ

Matt Bronze



EUL001AB

Antique Brass



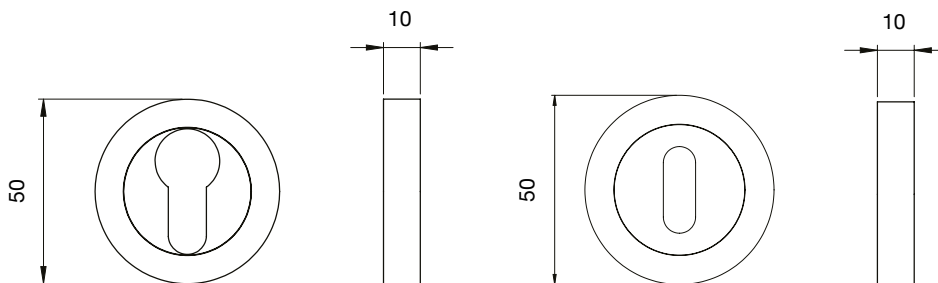
EUL001SB

Satin Brass



EUL001MB

Matt Black





EUL004
Thumbturn & Release



MADE IN ITALY



EUL004SN
Satin Nickel



EUL004PN
Polished Nickel



EUL004MBRZ
Matt Bronze



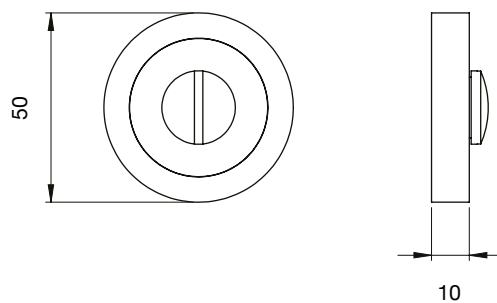
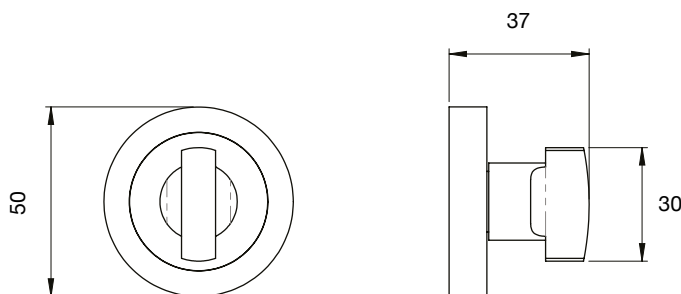
EUL004AB
Antique Brass



EUL004SB
Satin Brass



EUL004MB
Matt Black



HIN1433P/13

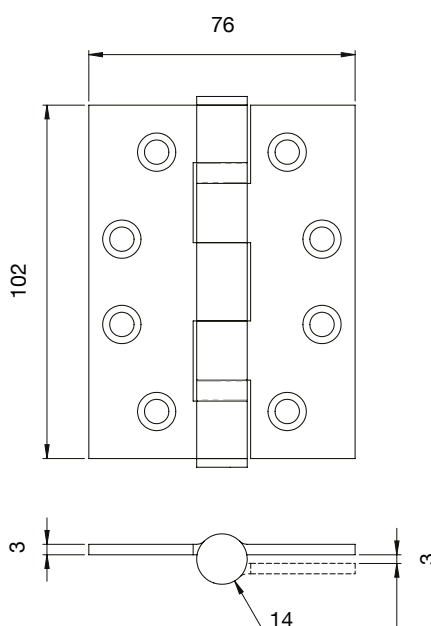
Grade 13 ball bearing hinge
Supplied in pairs with matching screws,
spare screws available

HIN1433P/13/R

Radius version available

120Kg

Max loading



HIN1433P/13SN
Satin Nickel



HIN1433P/13PN
Polished Nickel



HIN1433P/13MBRZ
Matt Bronze



HIN1433P/13AB
Antique Brass



HIN1433P/13SB
Satin Brass



HIN1433P/13MB
Matt Black



APPROVED PRODUCT
CF5776



EN 1935:2002							
4	7	6	1	1	4	0	13



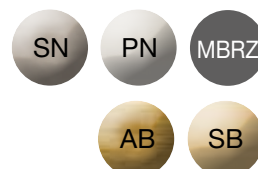
HDPBW21

76x50x2mm

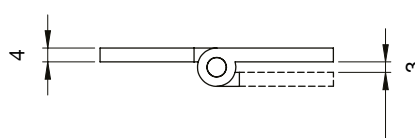
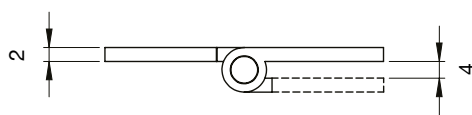
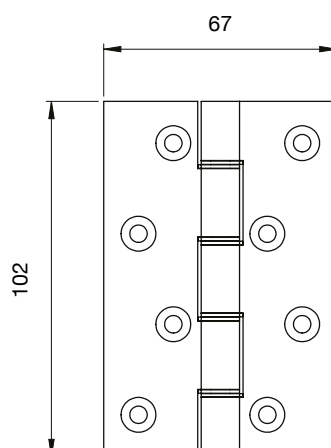
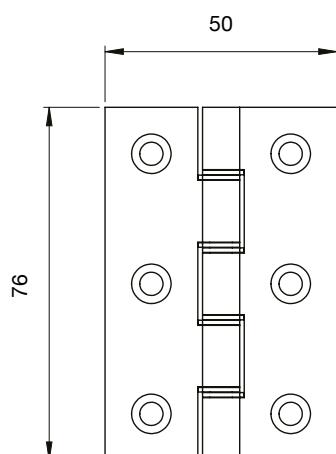


HDPBW61

102x67x4mm



Double phosphor bronze
Washed butt hinge
Supplied in pairs with matching screws,
spare screws available



HDPBW21SN

Satin Nickel



HDPBW21PN

Polished Nickel



HDPBW21MBRZ

Matt Bronze



HDPBW21AB

Antique Brass



HDPBW21SB

Satin Brass



HDPBW21MB

Matt Black

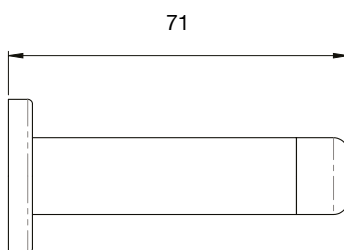
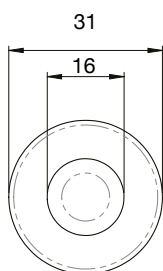
CONCEALED FIRE RATED HINGES
ALSO AVAILABLE. PLEASE SPEAK TO
CUSTOMER SERVICES ON
01228 511030 FOR DETAILS



DOOR STOPS



WALL MOUNTED DOOR STOPS



AZ21SN
Satin Nickel



AZ21PN
Polished Nickel



AA21MBRZ
Matt Bronze



AA21AB
Antique Brass



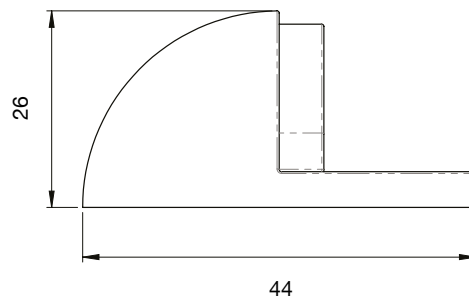
AA21SB
Satin Brass



AA21MB
Matt Black



OVAL FLOOR MOUNTED DOOR STOPS



AA20SN
Satin Nickel



AA20PN
Polished Nickel



AA20MBRZ
Matt Bronze



AA20AB
Antique Brass

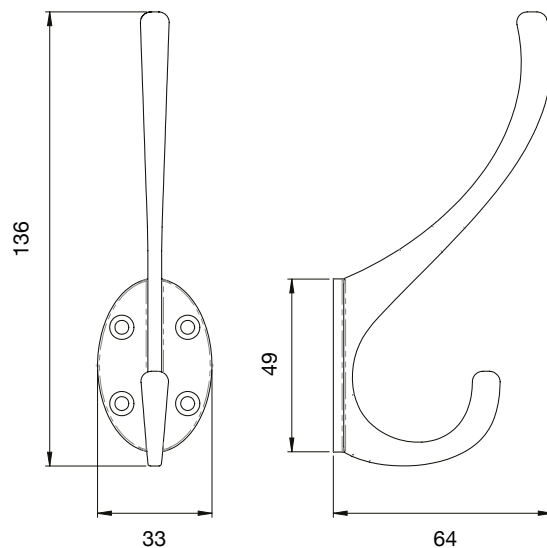


AA20SB
Satin Brass



AA20MB
Matt Black

HAT & COAT HOOKS



AA25SN
Satin Nickel



AA25PN
Polished Nickel



AA25MBRZ
Matt Bronze



AA25AB
Antique Brass



AA25SB
Satin Brass



AA25MB
Matt Black

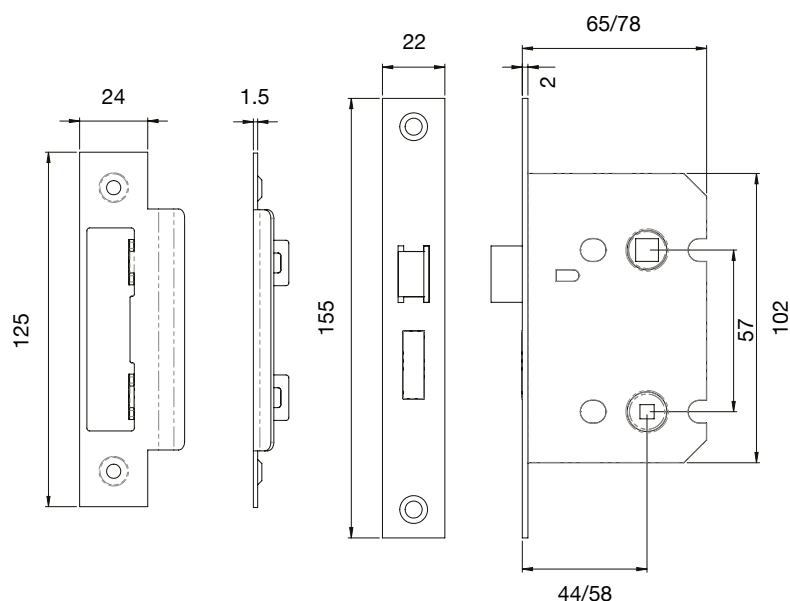




BAE5025
2.5"

BAE5030
3"

Easi-T bathroom lock



BAE5025SN
Satin Nickel



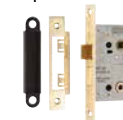
BAE5025NP
Polished Nickel



BAE5025MBRZ
Matt Bronze



BAE5025AB
Antique Brass



BAE5025SB
Satin Brass



BAE5025MB
Matt Black



APPROVED PRODUCT
CF5610



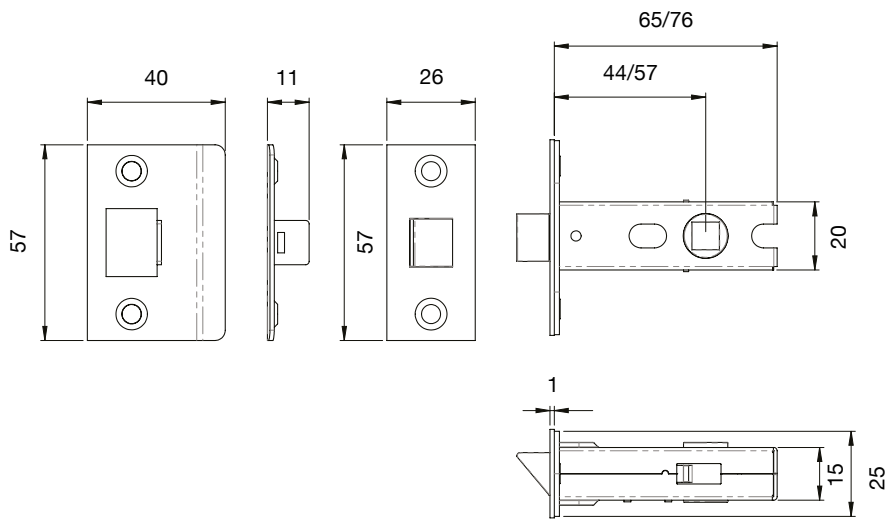
EN 12209:2003										
2	H	8	1	0	F	-	B	G	2	0

FD30/60 applicable when used with ES1276 intumescent pack, see P42

BTL25
2.5"

BTL30
3"

Tubular mortice latch



BTL25SN
Satin Nickel



BTL25NP
Polished Nickel



BTL25MBRZ
Matt Bronze



BTL25AB
Antique Brass



BTL25SB
Satin Brass



BTL25MB
Matt Black



EN 12209:2003										
NPD	A	7	1	0	0	-	B	0	1	0

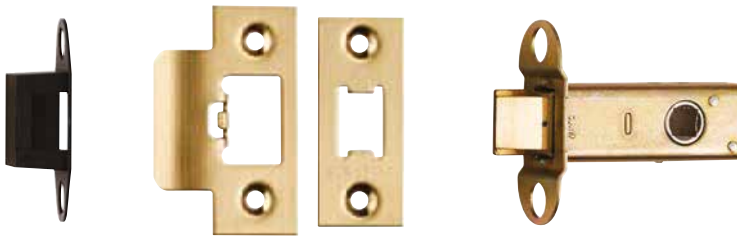
FD30/60 applicable when used with ES1283 intumescent pack, see P42

FSF5009

Forend and strike pack
to suit TLS latch

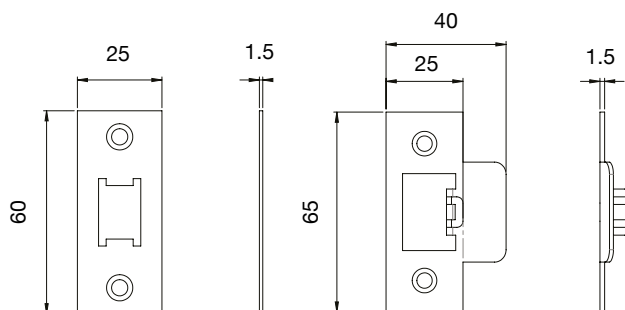
FSF5009/R

Radius version available



FSF5009

TLS5025/30/40/50



FSF5009SSS

Satin Stainless Steel
Recommended match for SN



FSF5009BSS

Bright Stainless Steel
Recommended match for PN



FSF5009MBRZ

Matt Bronze



FSF5009AB

Antique Brass



FSF5009SB

Satin Brass



FSF5009MB

Matt Black



APPROVED PRODUCT
CF611

EN 12209:2003										
NPD	A	7	1	0	NPD	-	B	0/1/ 2/3	NPD	0

Certification for TLS latch recommended for knurled lever
FD30/60 applicable when used with ES1283 intumescent pack, see P42

FSF5010

Forend and strike pack
to suit TLD deadbolt

FSF5010/R

Radius version available



FSF5010

TLD5025/30/40/50



FSF5010SSS

Satin Stainless Steel
Recommended match for SN



FSF5010BSS

Bright Stainless Steel
Recommended match for PN



FSF5010MBRZ

Matt Bronze



FSF5010AB

Antique Brass



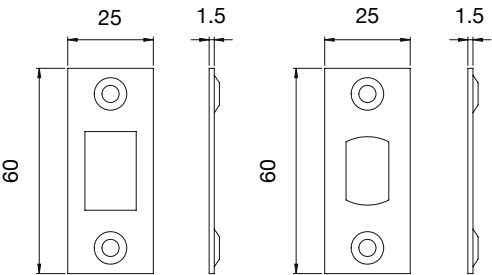
FSF5010SB

Satin Brass



FSF5010MB

Matt Black



EN 12209:2003										
3	H	8	1	0	F	-	B	G	0	0

Certification for TLD deadbolt
FD30/60 applicable when used with ES1283 intumescent pack, see P42



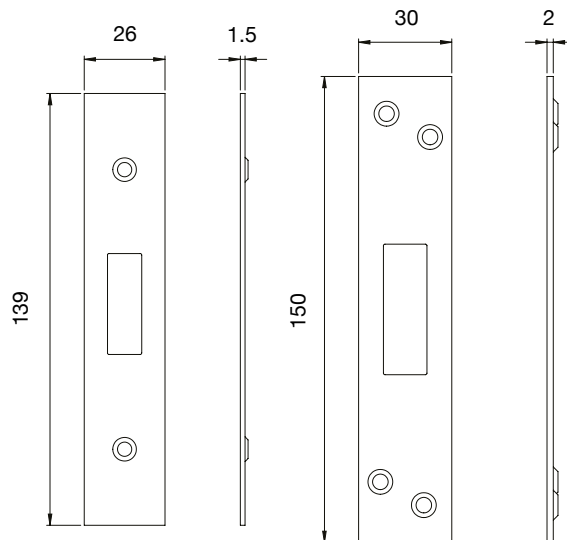
FSF5007
Forend and strike pack
to suit EDS/LDS/ODS architectural deadlock

FSF5007/R
Radius version available



FSF5007

EDS5025



FSF5007SSS
Satin Stainless Steel
Recommended match for SN



FSF5007BSS
Bright Stainless Steel
Recommended match for PN



FSF5007MBRZ
Matt Bronze



FSF5007AB
Antique Brass



FSF5007SB
Satin Brass



FSF5007MB
Matt Black



EN 12209:2003										
3	H	8	1	0	F	2	B	A	0	0

Certification for EDS/ODS architectural deadlock

EN 12209:2003										
3	H	8	1	0	F	2	K	D	0	A

Certification for LDS 3 lever architectural deadlock

EN 12209:2003										
3	H	8	1	0	F	2	K	D	0	B

Certification for LDS 5 lever architectural deadlock
FD30/60 applicable when used with ES1273 intumescent pack, see P42



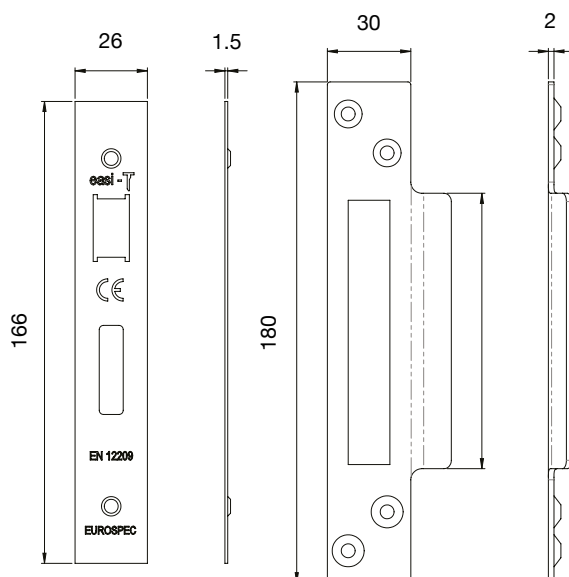
FSF5004
Forend and strike pack
to suit ESS/LSS and OSS architectural sashlock
and BAS architectural bathroom lock

FSF5004/R
Radius version available



FSF5004

ESS5025



EN 12209:2003										
2	H	8	1	0	F	2	B	A	2	0

Certification for ESS/OSS architectural sashlock

EN 12209:2003										
2	H	8	1	0	F	2	K	D	2	A

Certification for LSS 3 lever architectural sashlock

EN 12209:2003										
2	H	8	1	0	F	2	K	D	2	B

Certification for LSS 5 lever architectural sashlock

EN 12209:2003										
2	H	8	1	0	F	-	B	G	2	0

Certification for BAS architectural bathroom lock
FD30/60 applicable when used with ES1271 intumescent pack, see P42



FSF5004SSS
Satin Stainless Steel
Recommended match for SN



FSF5004BSS
Bright Stainless Steel
Recommended match for PN



FSF5004MBRZ
Matt Bronze



FSF5004AB
Antique Brass



FSF5004SB
Satin Brass



FSF5004MB
Matt Black

FSF5015

Forend and strike pack
to suit DLS0060EP DIN deadlock

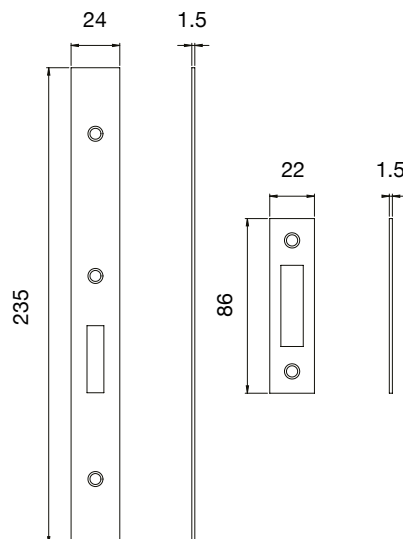
FSF5015/R

Radius version available



FSF5015

DLS0060EP



(Special Order) **FSF5015SSS**

Satin Stainless Steel
Recommended match for SN

FSF5015BSS

Bright Stainless Steel
Recommended match for PN

FSF5015MBRZ

Matt Bronze

FSF5015AB

Antique Brass

FSF5015SB

Satin Brass

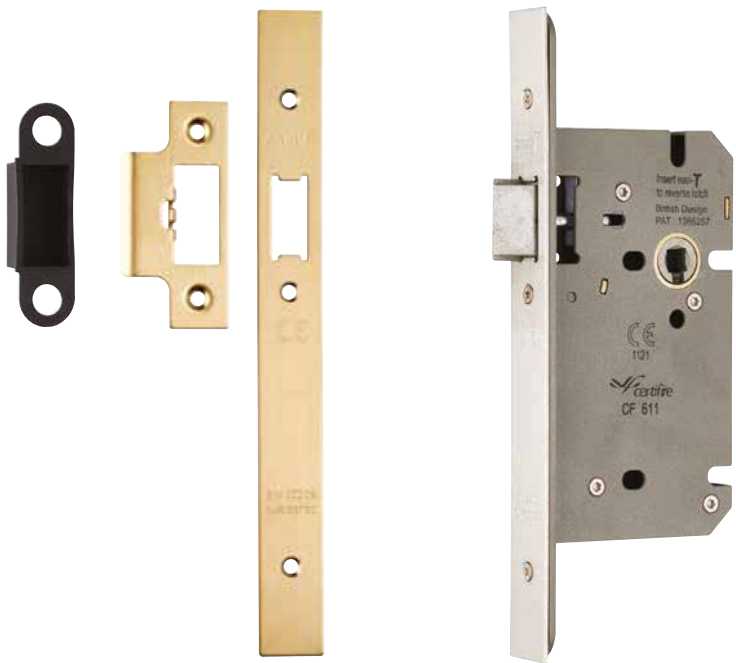
FSF5015MB

Matt Black



EN 12209:2003									
3	M	8	1	0	F	3	B	A	0 0

Certification for DIN deadlock
FD30/60 applicable when used with ES1274 intumescent pack, see P42

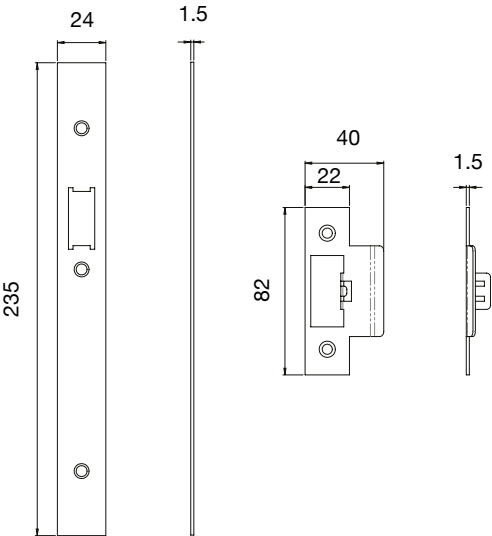


FSF5016

DLS0060L

FSF5016
Forend and strike pack
to suit DLS0060L DIN latch

FSF5016/R
Radius version available



(Special Order) **FSF5016SSS**
Satin Stainless Steel
Recommended match for SN

FSF5016BSS
Bright Stainless Steel
Recommended match for PN

FSF5016MBRZ
Matt Bronze

FSF5016AB
Antique Brass

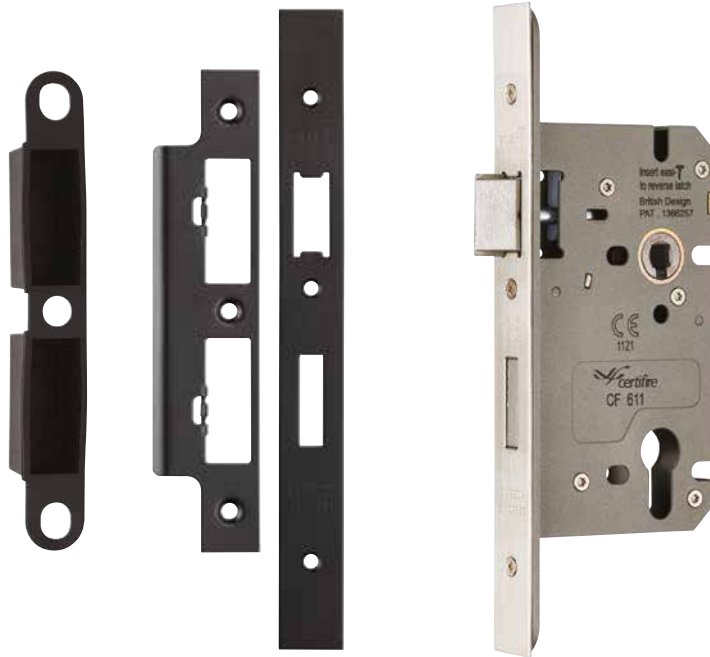
FSF5016SB
Satin Brass

FSF5016MB
Matt Black



EN 12209:2003										
3	M	8	1	0	F	-	B	0	2	0

Certification for DIN latch
FD30/60 applicable when used with ES1274 intumescent pack, see P42

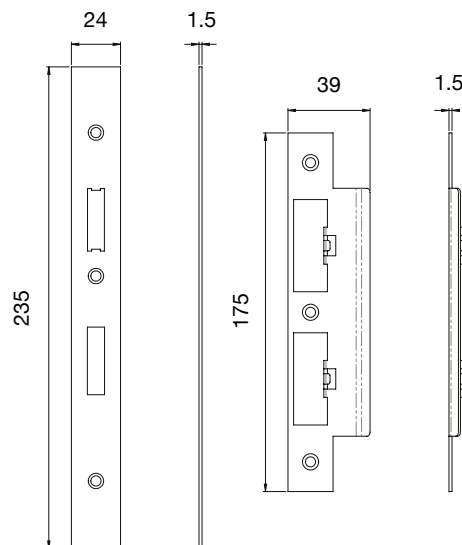


FSF5017

DLS7260EP

FSF5017
Forend and strike pack
to suit DLS7260EP DIN sashlock and
DLS7860WC DIN bathroom lock

FSF5017/R
Radius version available



EN 12209:2003										
3	M	8	1	0	F	3	B	A	2	0

Certification for DIN sashlock

EN 12209:2003										
3	M	8	1	0	F	-	B	G	2	0

Certification for DIN bathroom lock

FD30/60 applicable when used with ES1274 intumescent pack, see P42



FSF5017SSS
Satin Stainless Steel
Recommended match for SN



FSF5017BSS
Bright Stainless Steel
Recommended match for PN



FSF5017MBRZ
Matt Bronze



FSF5017AB
Antique Brass



FSF5017SB
Satin Brass



FSF5017MB
Matt Black

5 PIN CYLINDERS NOW AVAILABLE IN BLACK

Available as:

Single
Double
Cylinder & Turn

in standard sizes

A choice of:

Black
Polished Chrome
Polished Brass
Satin Chrome

Provides a
good degree
of security



Suitable for use
on 30/60 minute
fire doors

Domestic and
commercial use



BS EN 1303

1	6	0	B	0	C	5	D
---	---	---	---	---	---	---	---

5 year
mechanical
guarantee

★ 3 KEYS AS STANDARD

★ NEW BLACK FINISH

★ POLISHED BRASS

★ POLISHED CHROME

★ SATIN CHROME



FSS600

Surface Mounted Rack & Pinion Overhead Door Closer
EN2-4 power adjustable by spring door closer

Technical Data



Declaration of Performance:
Available via our website



Certifire Certificate No.:
CF 5294



Classification:

Fig 1

4	8	4	1	1	3
---	---	---	---	---	---

Fig 6

3	8	4	1	1	3
---	---	---	---	---	---

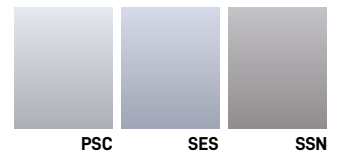
CE Certificate No.:
1121-CPD-AD5195



Dimensions:
Available on request

Available Cover & Arm Finishes

Metallic Finishes



PSC

SES

SSN

RAL Colours and other plated finishes
available to Special Order -
Please refer to pages 58 - 61 for the
full range of finishes available on all
Foris Solutions door closers

- Extruded Body
- Rack and Pinion mechanism with flat form armset
- Adjustable closing speed and latch action
- Backcheck
- Optional Delayed Action Model available S610*
- Universal Application)
- Slimline Rectangular, Semi & Full Radius cover options
- Genuine Stainless Steel material is used for all Stainless Steel Cover variants.
- Capable of assisting in meeting the requirements of BS8300 and Approved Document M

*The product falls outside of its CE & Certifire approval with this feature in use

FSS800

Surface Mounted Rack & Pinion Overhead Door Closer
EN2-5 power adjustable by spring door closer



Technical Data



Declaration of Performance:
Available on request.



Certifire Certificate No.:
CF 5294



Classification:

Fig 1

4	8	$\frac{5}{2}$	1	1	4
---	---	---------------	---	---	---

Fig 6

3	8	$\frac{4}{3}$	1	1	4
---	---	---------------	---	---	---

CE Certificate No.:
1121-CPD-AD5196

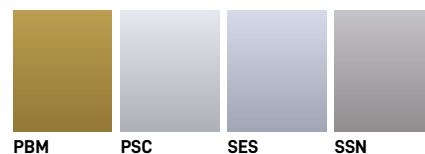


Dimensions:
Available on request

- Extruded Body
- Rack and Pinion mechanism with flat form armset
- Adjustable closing speed and latch action
- Backcheck
- Optional Delayed Action Model available S810*
- Universal Application (Fig 1, Fig 6 & Fig 61)
- Slimline Rectangular, Semi & Full Radius cover options
- Genuine Stainless Steel material is used for all Stainless Steel Cover variants.
- Capable of assisting in meeting the requirements of BS8300 and Approved Document M

Available Cover & Arm Finishes

Metallic Finishes



RAL Colours and other plated finishes
available to Special Order.
Please refer to pages 58 - 61 for the
full range of finishes available on all
Foris Solutions door closers

*The product falls outside of its CE & Certifire approval with this feature in use

FS1000

Concealed High Efficiency CAM Action Overhead Door Closer
EN2-4 power adjustable by spring door closer



Technical Data



Declaration of Performance:
Available via our website



Certifire Certificate No.:
CF 5293



Classification:

3 8 4 1 1 3

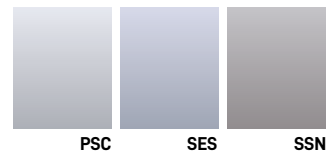
CE Certificate No.:
1121-CPD-AD5192



Dimensions:
Available on request

Available Cover & Arm Finishes

Metallic Finishes



PSC

SES

SSN

RAL Colours and other plated finishes
available to Special Order -
Please refer to pages 59 - 62 for the
full range of finishes available on all
Foris Solutions door closers

- Aluminium Extruded Body
- High performance CAM action mechanism
- 23mm wide slide track with matching arm
- Adjustable closing power, speed and latch action
- Cushion Stop supplied
- Mechanical Hold Open Device available *(Not suitable for use on fire doors)
- Fully reversible for use in door or transom fixing positions
- Minimum door thickness 44mm
- Intumescent packs available
- Electro-magnetic hold-open versions also available

*The product falls outside of its CE & Certifire approval with this feature in use

STANDARD FINISHES

Trends in materials and aesthetics fluctuate but you can be sure that at Synergy, we are adept at providing you with the right finish for your project.

The range of popular finishes from Synergy are presented in this brochure. Highlighted opposite are the brass and steel metallic options along with our colour powder coated finish that is available in any RAL colour. In addition, our standard bronze finishes are illustrated overleaf, whilst we can utilise our expertise and experience if you require a bespoke shade.

These finishes are created by our skilled craftsman who take great pride in their work. Either applied, electroplated or hand polished, the range of finishes from Synergy provide a host of decorative options that meet the highest possible standard.



SSN
Satin Stainless Steel cover with Satin Nickel arm and track.



SSS
Satin Stainless Steel.
(Floor springs only).



PSC
Polished Stainless Steel cover with Polished Chrome arm and track.



PSS
Polished Stainless Steel.
(Floor springs only).

SES
Silver coated.



SBM
Satin Brass with matching arm.



SCU
Satin Copper with matching arm.



PBM
Polished Brass with matching arm.



PCU
Polished Copper with matching arm.



ABRA
Antique Brass with matching arm.



RAL
Colour powder coated.
(Any RAL colour available to special order).

BRONZE FINISHES



CBR
Copper Bronze.



ABR
Aged Bronze.



OBR
Orange Bronze.



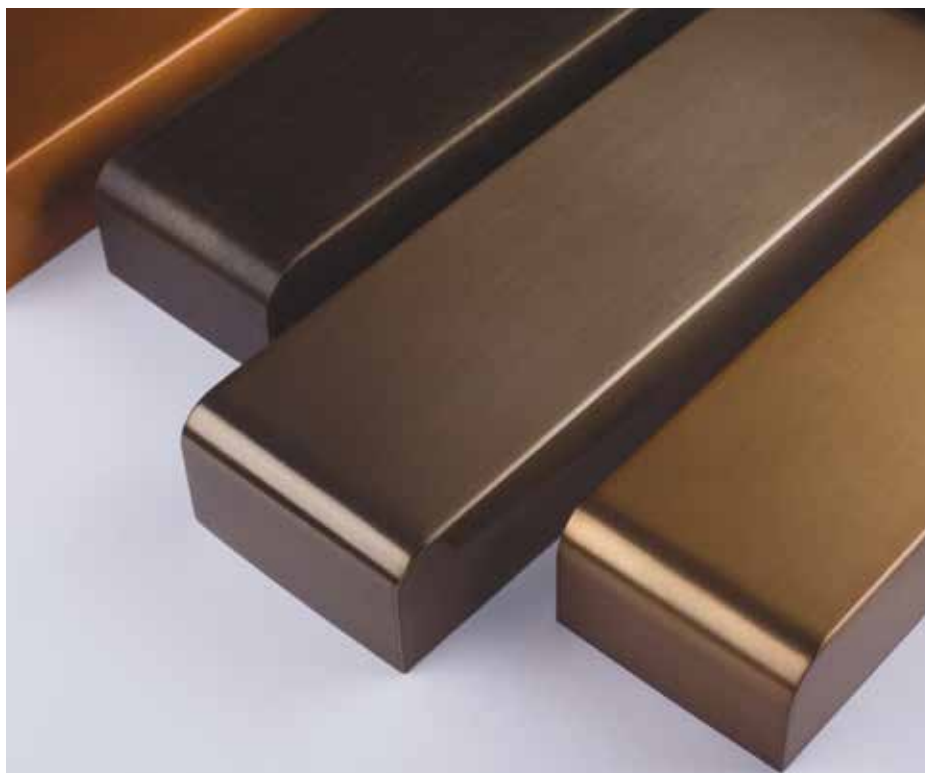
BBR
Brown Bronze.



LBR
Light Bronze.



MBR
Mahogany Bronze.



DBR
Dark Bronze.



GYB
Grey Bronze.



CHB
Chestnut Bronze.



MIB
Midnight Bronze.



GBR
Grained Bronze.



BLB
Black Bronze.

BATHROOM ACCESSORIES



AISI 304 Stainless Steel

POMPEI



Hanger

Ref. GW05 55 04 03



Tumbler holder

Ref. GW05 56 04 03



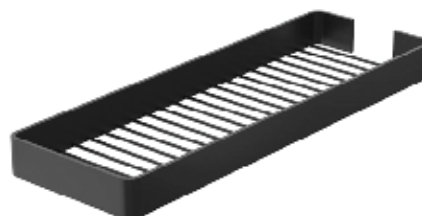
Soap dish

Ref. GW05 58 04 03



Soap holder

Ref. GW05 57 04 03



Shower basket

Ref. GW05 60 04 03



Wall mounted soap dispenser

Ref. GW05 59 04 03



Paper holder

Ref. GW05 61 04 03

AISI 304 Stainless Steel



Towel holder
Ref. GW05 62 04 03



Towel bar
Ref. GW05 64 04 03
Bar 570 mm



Toilet brush holder
Ref. GW05 63 04 03



Double towel bar
Ref. GW05 65 04 03
Bar 570 mm



Glass shelf
Ref. GW05 66 04 03



Towel shelf
Ref. GW05 67 04 03

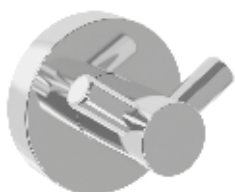
Chromed Zinc

CARTAGO



Hanger

Ref. GW05 01 05 02



Double Hanger

Ref. GW05 01 05 02B



Tumbler holder

Ref. GW05 02 05 02



Soap holder

Ref. GW05 03 05 02



Soap dish

Ref. GW05 04 05 02



Soap dispenser

Ref. GW05 05 05 02



Shower soap holder

Ref. GW05 06 05 02

Chromed Zinc



Paper holder
Ref. GW05 07 05 02



Paper holder
Ref. GW05 08 05 02



Toilet brush
Ref. GW05 09 05 02



Towel ring
Ref. GW05 10 05 02



Towel bar
Ref. GW05 11 05 02
Bar 580 mm



Glass shelf
Ref. GW05 13 05 02



Double towel bar
Ref. GW05 12 05 02
Double bar 580 mm

AISI 304 Stainless Steel

CRETA



Hanger

Ref. GW05 40 04 02B



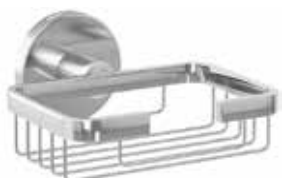
Double hanger

Ref. GW05 40 04 02



Tumbler holder

Ref. GW05 41 04 02



Soap holder

Ref. GW05 42 04 02



Soap dish

Ref. GW05 43 04 02



Wall mounted soap dispenser

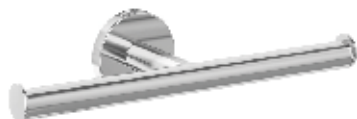
Ref. GW05 44 04 02



Paper holder

Ref. GW05 45 04 02

304 Stainless Steel



Double paper holder

Ref. GW05 46 04 02



Towel ring

Ref. GW05 47 04 02



Toilet brush holder

Ref. GW05 48 04 02



Towel bar

Ref. GW05 49 04 02



Double towel bar

Ref. GW05 50 04 02



Glass shelf

Ref. GW05 51 04 02



Towel shelf

Ref. GW05 52 04 02

AISI 304 Stainless Steel

GERUNDA



Hanger

Ref. GW05 01 04 01B



Double hanger

Ref. GW05 01 04 01



Tumbler holder

Ref. GW05 02 04 01



Soap holder

Ref. GW05 03 04 01



Soap dish

Ref. GW05 04 04 01



Wall mounted
soap dispenser

Ref. GW05 05 04 01



Paper dispenser

Ref. GW05 06 04 01

304 Stainless Steel



Paper holder
Ref. GW05 25 04 01



Toilet brush
Ref. GW05 07 04 01



Towel ring
Ref. GW05 08 04 01



Towel bar
Ref. GW05 09 04 01
Bar 575 mm



Double towel bar
Ref. GW05 10 04 01
Double bar 575 mm



Glass shelf
Ref. GW05 11 04 01



Towel shelf
Ref. GW05 12 04 01

AISI 304 Stainless Steel

FORMENTERA



Hanger

Ref. GW05 13 04 01



Double hanger

Ref. GW05 13 04 01B



Tumbler holder

Ref. GW05 14 04 01



Soap holder

Ref. GW05 15 04 01



Soap dish

Ref. GW05 16 04 01



Wall mounted soap dispenser

Ref. GW05 17 04 01



Paper dispenser

Ref. GW05 18 04 01

304 Stainless Steel



Toilet brush
Ref. GW05 19 04 01



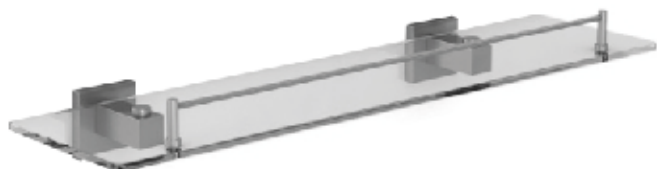
Towel bar
Ref. GW05 21 04 01
Bar 575 mm



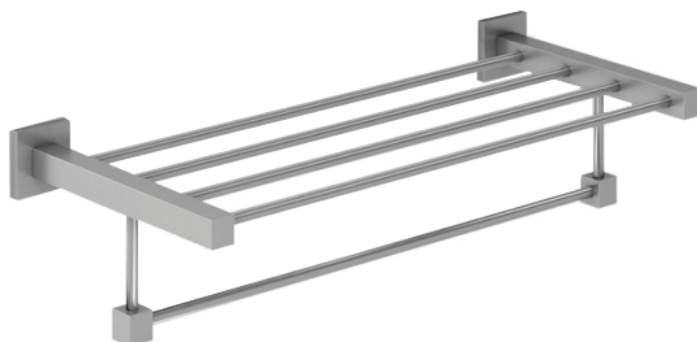
Towel ring
Ref. GW05 20 04 01



Double towel bar
Ref. GW05 22 04 01
Double bar 575 mm



Glass shelf
Ref. GW05 23 04 01



Towel shelf
Ref. GW05 24 04 01

Chromed Brass

ITALICA



Hanger

Ref. GW05 01 06 02



Tumbler holder

Ref. GW05 02 06 02



Soap holder

Ref. GW05 03 06 02



Soap dish

Ref. GW05 04 06 02



Paper dispenser

Ref. GW05 05 06 02



Paper holder

Ref. GW05 28 06 02



Towel ring

Ref. GW05 07 06 02

Chromed Brass



Toilet brush
Ref. GW05 06 06 02



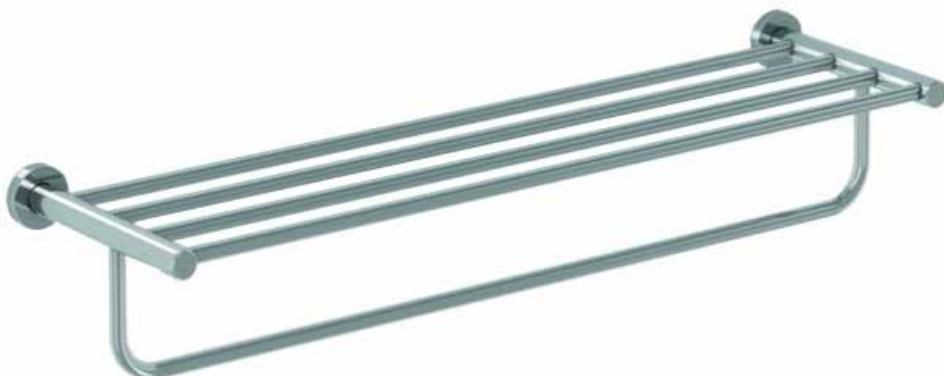
Towel bar
Ref. GW05 08 06 02
Bar 570 mm



Double towel bar
Ref. GW05 09 06 02
Double bar 570 mm



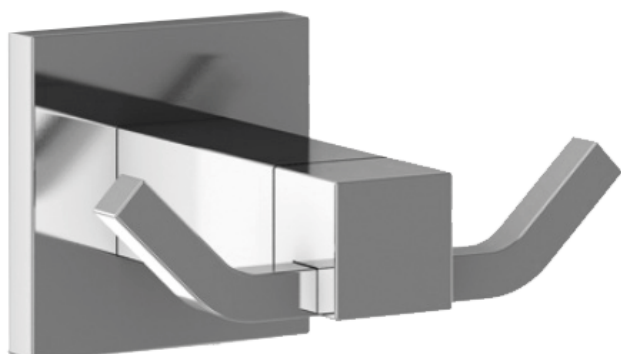
Glass shelf
Ref. GW05 10 06 02



Towel shelf
Ref. GW05 11 06 02

Chromed Brass

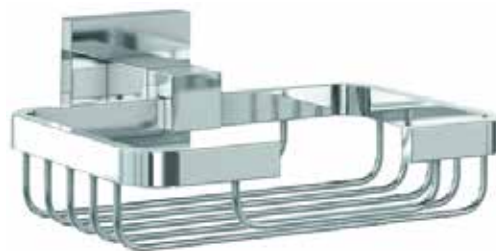
LUCENTUM



Double hanger
Ref. GW05 12 06 02



Tumbler holder
Ref. GW05 13 06 02



Soap holder
Ref. GW05 14 06 02



Soap dish
Ref. GW05 15 06 02



Paper dispenser
Ref. GW05 17 06 02

Chromed Brass



Toilet brush

Ref. GW05 16 06 02



Towel bar

Ref. GW05 18 06 02

Bar 585 mm



Double towel bar

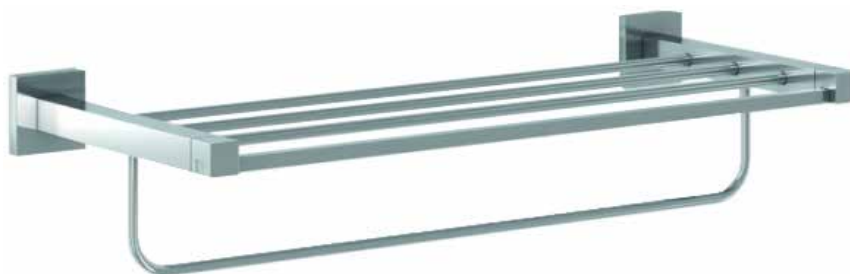
Ref. GW05 19 06 02

Double bar 585 mm



Glass shelf

Ref. GW05 20 06 02



Towel shelf

Ref. GW05 21 06 02

COMPLIMENTARY BATHROOM FITTINGS



135° support grab bar

Ref. GW05 22 06 02

Chromed brass

Tube diameter 25 mm

Measurements

195 x 400 x 120 mm



135° support grab bar with soap dish

Ref. GW05 23 06 02

Chromed brass

Tube diameter 25 mm

Measurements

195 x 400 x 120 mm



Straight bar 350mm

Ref. GW05 34 04 02

AISI 304 Stainless steel

Tube diameter 25 mm

Length 350 mm



Straight bar 500mm

Ref. GW05 35 04 02

AISI 304 Stainless steel

Tube diameter 25 mm

Length 500 mm



Rectangular soap dish

Ref. GW05 24 06 02
Chromed brass
Measurements
70 x 255 x 128 mm



Rectangular soap dish

Ref. GW05 25 04 02
AISI 304 Stainless steel
Measurements
34 x 155 x 114 mm



Triangular soap dish

Ref. GW05 26 06 02
Chromed brass
Measurements
55 x 295 x 205 mm



Triangular soap dish

Ref. GW05 27 04 02
AISI 304 Stainless steel
Measurements
47,5 x 180 x 180 mm



Rectangular soap basket

Ref. GW05 53 04 02
AISI 304 Stainless steel
Measurements
45 x 300 x 127 mm



Triangular soap basket

Ref. GW05 54 04 02
AISI 304 Stainless steel
Measurements
45 x 210 x 295 mm



Toilet brush

Ref. GW05 28 04 02
AISI 304 Stainless steel
Polished
Wall mounting included
Measurements
328 x Ø 76,5 mm



Toilet brush

Ref. GW05 38 04 01
AISI 304 Stainless steel
Brushed
Measurements
328 x Ø 76,5 mm



Paper holder with mobile shelf

Ref. GW05 37 04 02
AISI 304 Stainless steel
Polished
Measurements
92 x 180 x 78 mm



Clothes line

Ref. GW05 29 04 02
AISI 304 Stainless steel
Cord length 2,75m
Measurements
Ø 91 x 27



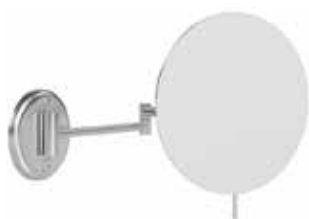
Basic hanger

Ref. GW05 33 05 01
Chromed zinc
Measurements
65 x 19 x 29 mm



4 x 1 hanger

Ref. GW05 32 05 02
Chromed zinc
Measurements
45 x 240 x 44 mm



Round Slim
magnifying mirror

Ref. GW05 38 06 02
Chromed brass



Square Slim
magnifying mirror

Ref. GW05 39 06 02
Chromed brass



Magnifying mirror

Ref. GW05 30 06 02
Chromed brass
Magnifying x3



Magnifying mirror

Ref. GW05 30 06 03
Chromed brass
Black matt
Magnifying x3



Magnifying mirror
with LED light

Ref. GW05 31 06 02
Chromed brass
Magnifying x3



Square magnifying
mirror with LED light

Ref. GW05 54 06 02
Chromed brass

WASHROOM ACCESSORIES



Hand Dryers

VERDEDRI

Ref. GW01 28 04 01
2 mm stainless steel
Brushed chrome

Replacement HEPA filter
Ref. GW01 28 90 01
For all VERDEdri units



Ref. GW01 28 02 00
3 mm aluminium
White epoxy



Ref. GW01 28 04 02
2 mm stainless steel
Polished chrome



Ref. GW01 28 02 03
3 mm aluminium
Black

HEPA

STERITOUCH
ANTI-BACTERIAL
TREATMENT

- Sensor operated
- Highly energy efficient
- Recommended on high traffic zones
- 3 speed motor settings
- HEPA Filtration included
- ADA compliant
- STERITOUCH anti-bacterial treatment
- Longest brush life
- Vandal-proof screws
- Measurements 368 x 311 x 100 mm

Technical features



Voltage	120 - 277 V	Electrical insulation	Class I
Frequency	50 / 60 Hz	Protection level	IP24
Air speed	241 - 362 Km/h	Weight	5,5 Kg
Airflow	71 - 109 m³/h	Drying time	12"
Air temperature	55°C	Sound level at 2 m	69 dB
Total power	675 / 950 W	rpm	26.000 - 31.000
Power of heating element	475 W	Automatic shut-off	30"
Motor power	200 / 475 W	Warranty (years)	5
Power consumption	4,1 - 8,3 A		

Hand Dryers

SMARTdri Plus

Ref. GW01 02 02 00
3 mm injected aluminium
White epoxy



Ref. GW01 02 04 01
2 mm stainless steel
Brushed chrome



Ref. GW01 02 02 03
3 mm injected aluminium
Black



Ref. GW01 02 04 02
2 mm stainless steel
Polished chrome

STERITOUCH
ANTI-BACTERIAL
TREATMENT

- Sensor operated
- Highly energy efficient
- Fast drying time
- 3 speed motor settings
- ON / OFF heating element
- STERITOUCH anti-bacterial treatment
- Longest brush life
- Filter included
- Vandal-proof screws
- Measurements 319 x 236 x 192 mm

Technical features



Voltage	220 - 240 V	Electrical insulation	Class I
Frequency	50 / 60 Hz	Protection level	IP24
Air speed	200 - 400 Km/h	Weight	5,1 Kg
Airflow	65 - 130 m³/h	Drying time	10"
Air temperature	53°C	Sound level at 2 m	69 / 77 dB
Total power	400 / 1.200 W	rpm	23.400
Power of heating element	400 W	Automatic shut-off	30"
Motor power	400 / 800 W	Warranty (years)	5
Power consumption	1,7 - 5,2 A		

Hand Dryers

BLADEflow-2



Ref. GW01 18 04 01
1 mm stainless steel
Brushed



Ref. GW01 18 04 00
1 mm stainless steel
White Epoxy



Ref. GW01 18 04 03
1 mm stainless steel
Black

- Sensor operated
- Highly energy efficient
- Fast drying time
- Anti-vandalism stainless steel cover
- Exclusive design
- HEPA filter included
- Water tank included

Technical features



Voltage	220 - 240 V	Electrical insulation	Class I
Frequency	50 / 60 Hz	Protection level	IPX1
Air speed	342 Km/h	Weight	13 Kg
Airflow	228 m ³ /h	Drying time	10"
Air temperature	60 °C	Sound level at 2 m	75 dB
Total power	1.650 W	rpm	20.000
Power of heating element	850 W	Automatic shut-off	60"
Motor power	800 W	Warranty (years)	3
Power consumption	10 A		

Hand Dryers

AIRforce

Ref. GW01 04 02 00
3 mm injected aluminium
White epoxy



Ref. GW01 04 02 02
3 mm injected aluminium
Polished chrome



Ref. GW01 04 04 02
2 mm stainless steel
Polished



Ref. GW01 04 02 03
3 mm injected aluminium
Black



Ref. GW01 04 02 01
3 mm injected aluminium
Brushed chrome

Ref. GW01 04 04 01
2 mm stainless steel
Brushed

STERITOUCH
ANTI-BACTERIAL
TREATMENT

- Sensor operated
- Highly energy efficient
- Fast drying time
- Without heating element
- Innovative multi-port diffuser nozzle
- STERITOUCH anti-bacterial treatment
- Modern design
- Filter included
- Vandal-proof screws
- Measurements 272 x 226 x 165 mm

Technical features



Voltage	220 - 240 V	Power consumption	4,8A
Frequency	50 / 60 Hz	Electrical insulation	Class I
Air speed	332 Km/h	Protection level	IP24
Airflow	178 m³/h	Drying time	12"
Air temperature	40 °C	Sound level at 2 m	72 dB
Total power	1.100 W	rpm	34.000
Power of heating element	-	Automatic shut-off	30"
Motor power	1.100 W	Warranty (years)	5

Toilet Roll Dispensers

Ref. GW03 02 04 01
AISI 304 stainless steel
Brushed



Ref. GW03 02 04 02
AISI 304 stainless steel
Polished



Ref. GW03 02 04 03
AISI 304 stainless steel
Matt black



Toilet roll paper dispenser

- Surface mounted
- Center lock key
- Rubber rings in core to fix paper roll
- With backplate
- Measurements 275 x 275 x 121 mm

Paper Towel Dispensers

Ref. GW03 04 04 01
AISI 304 stainless steel
Brushed



Ref. GW03 04 04 02
AISI 304 stainless steel
Polished



Ref. GW03 04 04 03
AISI 304 stainless steel
Matt black



Paper towel dispenser

- 250 C-type towel capacity
- 300 Z-type towel capacity
- Upper lock key
- Measurements 203 x 279 x 102 mm

Paper Towel Dispensers

Ref. GW03 05 04 01
AISI 304 stainless steel
Brushed



Ref. GW03 05 04 02
AISI 304 stainless steel
Polished



Ref. GW03 05 04 03
AISI 304 stainless steel
Matt black



Paper towel dispenser

- 450 C-type towel capacity
- 600 Z-type towel capacity
- Upper lock key
- Measurements 389 x 279 x 102 mm


Ref. GW03 24 04 01
AISI 304 stainless steel
Brushed




Automatic paper towel dispenser

- 450 C-type towel capacity
- 600 Z-type towel capacity
- Lateral lock key

Soap Dispensers

 Ref. GW04 20 04 01
AISI 304 stainless steel
Brushed




Ref. GW04 20 04 02 
AISI 304 stainless steel
Polished




Automatic soap dispenser

- Automatic operated
- Operated by 4 AA batteries
- 1ml dose
- Non drip pump mechanism
- Level viewer
- Measurements 210 x 140 x 100 mm

 Ref. GW04 21 04 01
AISI 304 stainless steel
Brushed



Ref. GW04 21 04 03 
AISI 304 stainless steel
Matt black



Manual soap dispenser

- Manual operated
- 1.800 ml capacity
- 1ml dose
- Non drip pump mechanism
- Level viewer
- Measurements 210 x 140 x 120 mm

Why Not Download Our Other Brochures?



Architectural Ironmongery
Specification Guide



Foris Doorset Solutions
General Guide



Solidus Doorset Solutions
Mental Health Applications



Washroom Solutions
General Guide



Infection Control Solutions
General Guide

Foris Solutions Limited

Unit 7, Bookers Way, Todwick Road Industrial Estate
Dinnington, Sheffield S25 3SH
T: 01909 560500

E: sales@foris-solutions.co.uk
www.foris-solutions.co.uk

Also at Harrogate, Warrington, Bury St Edmunds, Gateshead and Kettering