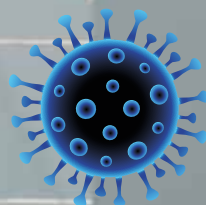


# CuNi-ORE™



**ICS CLEAN**

INFECTION CONTROL SOLUTIONS



The risk of cross contamination by touch has recently been high-lighted during the COVID pandemic and not exclusive to the health sector but, all building types private or public generally require persons to touch handles and other door fixed ironmongery products to move through buildings.

**80% of infections are spread by touch.**

Clearly, if the risk of cross contamination can be reduced by killing bacteria deposited to products we handle then it will help eradicate the spread of harmful viruses and bacteria.

CuNi-ORE™ ironmongery products are manufactured using a copper-nickel alloy with small amounts of iron and manganese to provide a natural base material with inherent anti-microbial properties that will kill and eradicate 99.9% of harmful viruses and bacteria within 2 hours.



**Bug survival :- satin stainless steel 3 – 7 days / plastic 3 – 7 days / glass 4 days**

**CuNi-ORE™ Kills 99.9% of harmful viruses and bacteria in 2 hours**

CuNi-ORE™ has been developed following years of research and testing with the CDA (Copper Development Association) and studies such as that conducted at Selly Oak Hospital in 2008. A recent study completed at The School of Biological Sciences at the University of Southampton indicated that the COVID-19 virus was deactivated on copper within 1 minute whilst still active on other materials 24 hours later.



## **CuNi-ORE™**

CuNi-ORE™ is a range of ironmongery products manufactured in the UK using a copper-nickel alloy with 70% copper and with small amounts of iron and manganese providing extremely effective protection against cross contamination through touch with the aesthetics of a contemporary satin stainless steel finish.

The nickel, iron and manganese provide an extremely hardwearing durable finish that will not tarnish or oxidise even when cleaned frequently using common cleaning products and the copper will continue to kill 99.9% of harmful viruses and bacteria within 2 hours 24/7 – guaranteed for 25 years!

CuNi-ORE™ is Foris Solutions premium range of door fixed ironmongery products to assist with infection control in any building type.

### **CuNi-ORE™**

- Contemporary visual look of satin stainless steel
- 99.9% of harmful viruses and bacteria eradicated in less than 2 hours GUARANTEED for 25 Years





## CuNi-ORE™ Lever Handles

Lever handles are manufactured using solid round, oval and 'D' shaped sections secured to a metal base rose that is bolt through fixed with a clip-on cover to match the lever finish. The lever handle is also fixed to the 'Hese' spindle using threaded allen key screws that pierce the spindle providing a secure and robust installation compliant with EN1906 grade 4.

### Appearance of contemporary satin stainless steel finish

70% copper / 30% nickel, iron and manganese = hardwearing anti-microbial properties

**CuNi-ORE™ will kill 99.9% of harmful viruses and bacteria within 2 hours 24/7 continuously for 25 years GUARANTEED!**



## CuNi-ORE™ LEVER HANDLES

PATTERN NO	DESCRIPTION	DIMENSION DRAWINGS	UNIT	ILLUSTRATION (3D)
CuNi4001	130mm O/A x 19mm Ø SOLID STRIGHT LEVERS ON 52mm Ø x 4mm UNSPRUNG BALL BEARING ROSE BOLT THROUGH FIXINGS C/W SPINDLES		PAIR	
CuNi4002	145mm O/A x 19mm Ø SOLID 'T' BAR LEVERS ON 52mm Ø x 4mm UNSPRUNG BALL BEARING ROSE BOLT THROUGH FIXINGS C/W SPINDLES		PAIR	
CuNi4003	135mm O/A x 19mm Ø SOLID SAFETY LEVERS ON 52mm Ø x 4mm UNSPRUNG BALL BEARING ROSE BOLT THROUGH FIXINGS		PAIR	
CuNi4004	135mm O/A x 19mm Ø SOLID SAFETY LEVERS ON 52mm Ø x 4mm UNSPRUNG BALL BEARING ROSE BOLT THROUGH FIXINGS C/W SPINDLES		PAIR	
CuNi4005	135mm O/A 25mm x 12mm 'T' BAR 'D' SECTION LEVERS ON 52mm Ø x 4mm UNSPRUNG BUSH FIXING ROSE BOLT THROUGH FIXINGS		PAIR	
CuNi4006	145mm O/A x 28mm x 16mm OVAL SECTION 'T' BAR LEVERS ON 52mm Ø x 4mm UNSPRUNG BUSH FIXING ROSE BOLT THROUGH FIXINGS		PAIR	




## CuNi-ORE™ PULL HANDLES


PATTERN NO	DESCRIPTION		UNIT	ILLUSTRATION (3D)
CuNi5001	300mm C/C x 19mm Ø PULL HANDLE BOLT THROUGH FIXINGS		EACH	
CuNi5002	400mm C/C x 19mm Ø PULL HANDLE BOLT THROUGH FIXINGS		EACH	
CuNi5003	600mm C/C x 19mm Ø PULL HANDLE BOLT THROUGH FIXINGS		EACH	
CuNi5004	900mm C/C x 19mm Ø PULL HANDLE BOLT THROUGH FIXINGS		EACH	

PATTERN NO	DESCRIPTION		UNIT	ILLUSTRATION (3D)
CuNi5101	300mm C/C x 19mm Ø PULL HANDLE ON PILLARS (400mm O/A) BOLT THROUGH FIXINGS		EACH	
CuNi5102	400mm C/C x 19mm Ø PULL HANDLE ON PILLARS (500mm O/A) BOLT THROUGH FIXINGS		EACH	
CuNi5103	600mm C/C x 19mm Ø PULL HANDLE ON PILLARS (700mm O/A) BOLT THROUGH FIXINGS		EACH	
CuNi5104	900mm C/C x 19mm Ø PULL HANDLE ON PILLARS (1000mm O/A) BOLT THROUGH FIXINGS		EACH	



## CuNi-ORE™ PULL HANDLES

PATTERN NO	DESCRIPTION		UNIT	ILLUSTRATION (3D)
CuNi5201	400mm O/A 300mm C/C x 25mm x 12mm 'D' SECTION PULL HANDLE ON PILLARS BOLT THROUGH FIXINGS		EACH	
CuNi5202	500mm O/A 400mm C/C x 25mm x 12mm 'D' SECTION PULL HANDLE ON PILLARS BOLT THROUGH FIXINGS		EACH	
CuNi5203	700mm O/A 600mm C/C x 25mm x 12mm 'D' SECTION PULL HANDLE ON PILLARS BOLT THROUGH FIXINGS		EACH	
CuNi5204	1000mm O/A 900mm C/C x 25mm x 12mm 'D' SECTION PULL HANDLE ON PILLARS BOLT THROUGH FIXINGS		EACH	

PATTERN NO	DESCRIPTION		UNIT	ILLUSTRATION (3D)
CuNi5301	400mm O/A 300mm C/C x 28mm x 16mm OVAL 'T' BAR PULL HANDLE ON PILLARS BOLT THROUGH FIXINGS		EACH	
CuNi5302	500mm O/A 400mm C/C x 28mm x 16mm OVAL 'T' BAR PULL HANDLE ON PILLARS BOLT THROUGH FIXINGS		EACH	
CuNi5303	700mm O/A 600mm C/C x 28mm x 16mm OVAL 'T' BAR PULL HANDLE ON PILLARS BOLT THROUGH FIXINGS		EACH	
CuNi5304	1000mm O/A 900mm C/C x 28mm x 16mm OVAL 'T' BAR PULL HANDLE ON PILLARS BOLT THROUGH FIXINGS		EACH	



## CuNi-ORE™ ACCESSORIES

PATTERN No.	DESCRIPTION	DIMENSION DRAWINGS	UNIT	ILLUSTRATION (3D)
CuNi4501	52mm Ø x 4mm KEYHOLE PROFILE CYLINDER ESCUTCHEONS CONCEALED FIXING		EACH	
CuNi4502	52mm Ø x 4mm EURO PROFILE CYLINDER ESCUTCHEONS CONCEALED FIXING		EACH	
CuNi4601	75mm x 50mm RADIUS EURO PROFILE CYLINDER PULL		EACH	
CuNi6001	FINGER PLATE 450mm x 75mm x 1mm		EACH	
CuNi6002	FINGER PLATE 650mm x 75mm x 1mm		EACH	
CuNi4710	PEANUT THUMBTURN AND EMERGENCY RELEASE WITH INDICATOR (5mm SQUARE SPINDLE)		SET	
CuNi4711	DISABLED PEANUT THUMBTURN AND EMERGENCY RELEASE WITH INDICATOR (5mm SQUARE SPINDLE)		SET	
CuNi7001	35mm PROJECTION x 16mm Ø COAT HOOK WITH GROOVE CONCEALED FIXING		EACH	



# ICS CLEAN® – Infection Control Solutions

## CuNi-ORE™

CuNi-ORE™ is a range within ICS CLEAN® offered by Foris Solutions Ltd. We have other products that provide similar characteristics in terms of reducing the risk of spreading harmful viruses and bacteria through touch of door fixed ironmongery products.

Please call **01909 560500** to learn more about the products and services that we can provide that will assist building owners, contractors and architects to deliver cleaner and safer solutions to operate doors.

CuNi-ORE™ kills **99.9%** of harmful viruses and bacteria continuously **24/7** guaranteed for **25** years!

# **SALUS® Door and frame assemblies –**

## **BM TRADA Q MARK fire rated**

SALUS® bespoke doorsets from Foris Solutions are manufactured in a facility with BM TRADA Q MARK and ISO9001/14001 accreditations, manufacturing processes are third party continually monitored to ensure compliance with BM TRADA Q MARK standards.

SALUS® delivered to site prehung and with factory installed mortice ironmongery products to ensure compliance with all relevant fire evidence and manufacturer's installation templates.

- BM TRADA Q MARK fire rated solutions
- SALUS ELC Laminated core
- Hardwood lipping to all 4 edges
- Hardwood frames and architraves
- Lead protected solutions
- PVC Encapsulated doorsets
- Laminate / veneer / paint grade leaf facings

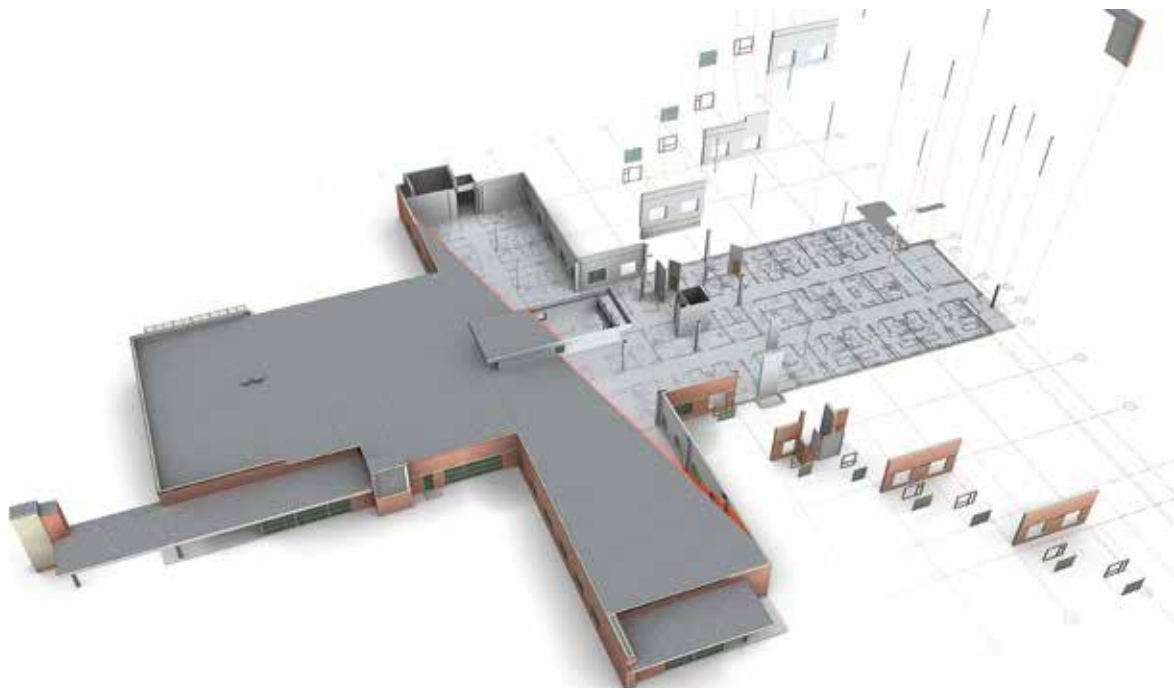
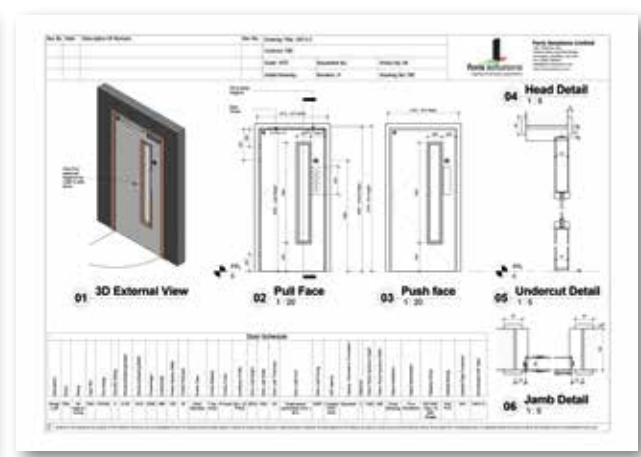
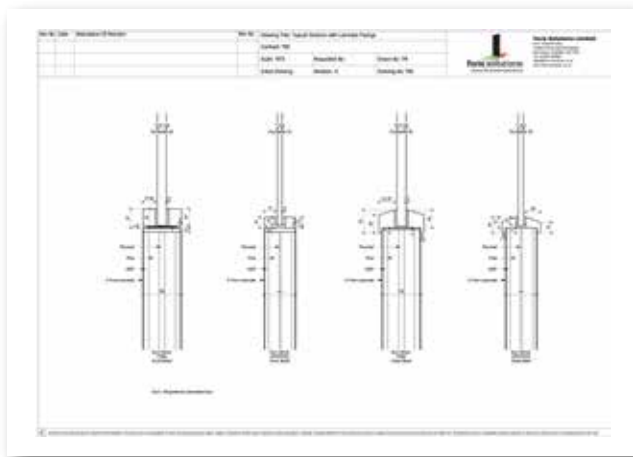
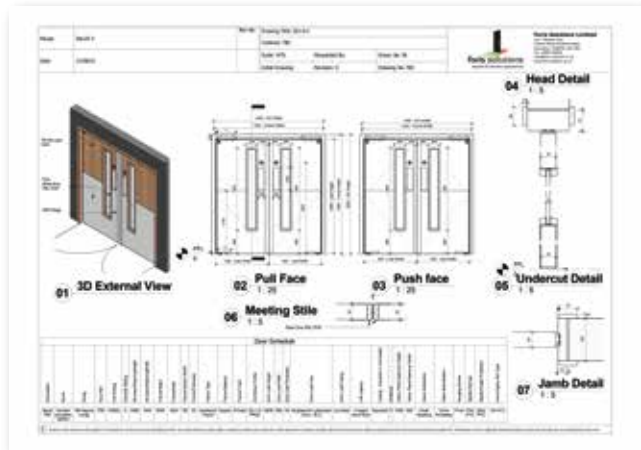


# SALUS® Door and frame assemblies – BIM Models

SALUS® BIM models are available via our website but, we would prefer to provide project specific drawings to support our specifications and to illustrate doorset designs with site dimensions confirmed.

‘Cobie’ detail is also included (Construction Operations Building Information Exchange) which can be used as an element of the building information.

- **SALUS® STANDARD MODELS**
- **SALUS® PROJECT SPECIFIC MODELS**
- **SALUS® COBie DETAIL**





# CUNI-ORE™